



NORDICA
LET'S SKI

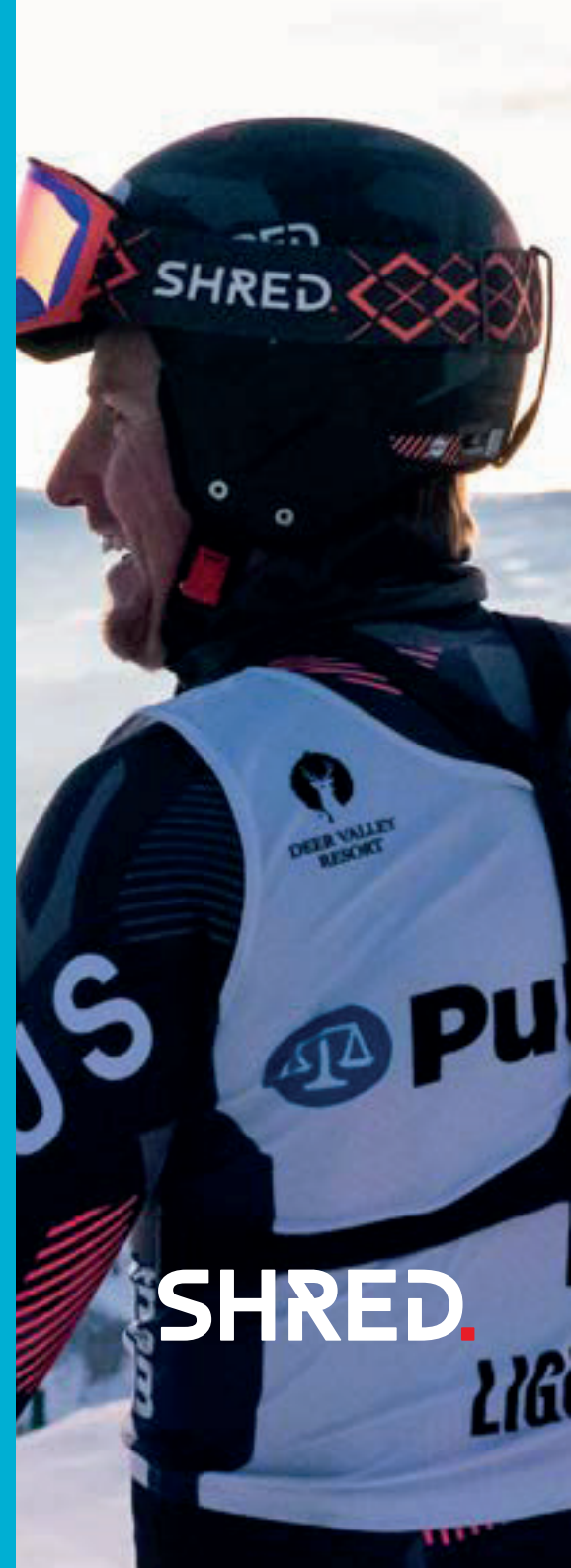
Race

Katalog 2024/2025



DAINESE

UYN



SHRED.

NORDICA
LET'S SKI



2024 | 2025
Workbook



Dobermann 5

A New Era.

BREAD FOR SUCCESS.

The new Dobermann collection looks as good as it performs. After all, since Nordica's inception in 1939, the brand has been synonymous not only with performance but also with design. And for the fifth generation of the Dobermann, we wanted to create an aesthetic that was especially worthy of the collection's legendary lineage. Forged directly into the mold for the shell, the Dobermann's black embossed logos shine on the boot's brushed surface. The classic Dobermann logo adorns the inside of the boot's cuff and is paired with the penetrating—and aggressive—red eyes that pop on the back of the boot's spine. Cloaked in black, the boot delivers a stealth appearance that alludes to its vicious performance.



FIND OUT
MORE



Word Cup / Dobermann

93mm

Dobermann 5 RD – ES

carry forward

050A06 00 100 - black



soles

Not replaceable -
Alpine DIN 5355

last (mm) flex
93 150-130

size range
22,5-29,5

g/MP 26,5
2450

liner type/style
Heel Link Laced Race Fit

technologies

Dynamic Booster Stiff
Double Setting
Quick Spoiler
4 Buckles RD Micro Alu
5 mm Lifters in Box

Dobermann 5 RD – S

carry forward

050A08 00 100 - black



soles

Not replaceable -
Alpine DIN 5355

last (mm) flex
93 140-120

size range
22,5-29,5

g/MP 26,5
2450

liner type/style
Heel Link Laced Race Fit

technologies

Dynamic Booster Stiff
Double Setting
Quick Spoiler
4 Buckles RD Micro Alu
5 mm Lifters in Box

Dobermann 5 RD – M

carry forward

050A10 00 100 - black



soles

Not replaceable -
Alpine DIN 5355

last (mm) flex
93 120-100

size range
22,5-29,5

g/MP 26,5
2450

liner type/style
Heel Link Laced Race Fit

technologies

Dynamic Booster Med
Double Setting
Quick Spoiler
4 Buckles RD Micro Alu
5 mm Lifters in Box

Dobermann 5 RD – soft L.C.

carry forward

050A12 00 100 - black



soles

Not replaceable -
Alpine DIN 5355

last (mm) flex
93 110-90

size range
22,5-27,5

g/MP 24,5
2060

liner type/style
Heel Link Laced Race Fit
L.C.

technologies

Dynamic Booster Med
Double Setting
Quick Spoiler
4 Buckles RD Micro Alu

Race – On Piste / Dobermann

96mm

Dobermann 5 S

carry forward

050A20 00 100 - black



soles

Not replaceable -
Alpine DIN 5355

last (mm) flex
96 140-120

size range
22,5-29,5

g/MP 26,5
2310

liner type/style
Dobermann 5 Race laced

technologies

Dynamic Booster Med
Double setting
Quick Spoiler
4 Buckles Micro Alu
screwed
5 mm Lifters in Box

Dobermann 5 M

carry forward

050A22 00 100 - black



soles

Not replaceable -
Alpine DIN 5355

last (mm) flex
96 120-100

size range
22,5-29,5

g/MP 26,5
2310

liner type/style
Dobermann 5 Race laced

technologies

Dynamic Booster Med
Double setting
Quick Spoiler
4 Buckles Micro Alu
screwed
5 mm Lifters in Box

Dobermann 5 M L.C.

carry forward

050A24 00 100 - black



soles

Not replaceable -
Alpine DIN 5355

last (mm) flex
96 110-90

size range
22,5-27,5

g/MP 24,5
2060

liner type/style
Dobermann 5 Race
laced L.C.

technologies

Strap 45mm
Quick set Spoiler
4 Buckles Micro Alu
screwed

Dobermann 5 soft L.C.

carry forward

050A28 00 100 - black



soles

Not replaceable -
Alpine DIN 5355

last (mm) flex
96 90-70

size range
22,5-27,5

g/MP 24,5
2060

liner type/style
Dobermann 5 Race
laced L.C.

technologies

Strap 45mm
Quick set Spoiler
4 Buckles Micro Alu
screwed

Racing



World Cup

Dobermann DH WC Dept EDT Plate



0A3531 LB 001
black / red

sizes

212 · 218

sidecut (by size)

R&D

radius (by size)

≥50

system

Speed Plate EDT

ski construction

Energy 2 Ti Worldcup

camRock

Full Camber Profile

suggested bindings

Comp 30 - 0C4140 00 001

Comp 20 - 0C4142 00 001

X-Comp 24 - 0C0160 00 001

Dobermann SG WC Dept EDT Plate



0A4404 00 001
black / red

sizes

185 · 195 · 202 · 205 · 212

sidecut (by size)

R&D

radius (by size)

≥30 (185) · ≥33 (195) · ≥35 (202) ·

≥40 (205) · ≥45 (212)

system

Speed Plate EDT

ski construction

Energy 2 Ti Worldcup

camRock

Full Camber Profile

suggested bindings

Comp 30 - 0C4140 00 001

Comp 20 - 0C4142 00 001

X-Comp 24 - 0C0160 00 001

Dobermann GS WC Dept Plate



0A4406 00 001
black / red

sizes

188 · 193

sidecut (by size)

R&D

radius (by size)

≥30

system

Piston Plate

ski construction

Energy 2 Ti Worldcup

camRock

Full Camber Profile

suggested bindings

Comp 20 - 0C4142 00 001

Comp 16 - 0C4144 00 001

X-Comp 18 - 0C0162 00 001

Dobermann SL WC Dept Plate



0A4408 00 001
black / red

sizes

156 · 165

sidecut (by size)

R&D

radius (by size)

R&D

system

Piston Plate 14mm

ski construction

Energy 2 Ti Worldcup

camRock

Full Camber Profile

suggested bindings

Comp 20 - 0C4142 00 001

Comp 16 - 0C4144 00 001

X-Comp 18 - 0C0162 00 001

Scouting

Dobermann SL WC Plate

0A4410 00 001
black / red

sizes

156 · 165

sidecut (by size)

R&D

radius (by size)

R&D

system

Piston Plate

ski construction

Energy 2 TI

camRock

Full Camber Profile

suggested bindings

Comp 16 - 0C4144 00 001

Comp 12 - 0C4146 00 001

X-Comp 18 - 0C0162 00 001



Dobermann GS Race Plate

0A4412 00 001
black / red

sizes

173 · 178 · 183 · 188

sidecut (by size)

R&D

radius (by size)

≥23 (173) ·

≥23 (178) ·

≥23 (183) ·

≥25 (188)

system

Piston Plate

ski construction

Energy 2 TI

camRock

Full Camber Profile

suggested bindings

Comp 16 - 0C4144 00 001

Comp 12 - 0C4146 00 001

X-Comp 18 - 0C0162 00 001



Dobermann SL Race Plate

0A4414 00 001
black / red

sizes

151

sidecut (by size)

112,5-65-97,5

radius (by size)

≥12

system

Piston Plate

ski construction

Energy 2 TI

camRock

Full Camber Profile

suggested bindings

Comp 16 - 0C4144 00 001

Comp 12 - 0C4146 00 001

X-Comp 18 - 0C0162 00 001



Junior Racing

Dobermann GSJ Plate

0A4416 00 001
black / red

sizes

129 · 136 · 143 · 150 ·
157 · 164 · 171

sidecut (by size)

102,5-65-84 (129) ·
103-65-84,5 (136) ·
103,5-65-85 (143) ·
104,5-65-86 (150) ·
104-65-87 (157) ·
105-65-88 (164-171)

radius (by size)

≥12 (129) ·
≥14 (136) ·
≥14 (143) ·
≥14 (150) ·
≥17 (157) ·
≥17 (164) ·
≥17 (171)

system

Junior Racing Plate New
S (136-150) · L (157-171)

ski construction

Energy 2 TI

camRock

Full Camber Profile

suggested bindings

Comp 10 TCX - 0C4148 00 001
Comp 10 - 0C4150 00 001
Comp J 8 - 0C4152 00 001

Dobermann SLJ Plate

0A4418 00 001
black / red

sizes

121 · 128 · 135 · 142 · 149

sidecut (by size)

105-64-90 (122) ·
109-64-94 (129-136) ·
112-65-97 (143) ·
113-65-98 (150)

radius (by size)

≥9 (121) ·
≥9 (128) ·
≥10 (135) ·
≥10 (142) ·
≥11 (149)

system

Junior Racing Plate New
S (121-135) · L (142-149)

ski construction

Energy 2 TI

camRock

Full Camber Profile

suggested bindings

Comp 10 TCX - 0C4148 00 001
Comp 10 - 0C4150 00 001
Comp J 8 - 0C4152 00 001





Business Trolley

ON3046 02 100 - black / red



Boot Backpack

ON3015 03 001 - black / red



Boot Bag

ON3014 03 001 - black / red



Boot Bag Lite

ON3037 03 001 - black / red



Pro Backpack

ON3052 00 741 - black / red



Race XL Duffle Roller Dobermann

ON3043 01 741 - black / red



12mtravel Bag

ON3048 00 001 - black



Ski Bag Lite

ON3038 01 741 - black / red



Single Ski Bag

ON3017 02 741 - black / red



3 Pair Ski Bag

GS RACE ON3034 00 741 - black / red

DH RACE - ON3035 00 741 - black / red



Double Roller Ski Bag

ON3018 02 001 - black / red



Cargo Roller Ski Bag

ON3033 00 741 - black / red

Bags



Race XL gear pack Domme

NEW
ON3055 00 001 - black
* not made by Invicta



Boot Backpack Lite

NEW
ON3054 00 001 - black / red
* not made by Invicta



Trend Backbag

ON3053 00 741 - black / red
* not made by Invicta





Dobermann Race

OB0828 01 001 - black / red
OB0832 01 001 - black / red (prepack 25)



Dobermann Multigara

NEW
OB0871 00 001 - black / red



Freeride Pro Woman

OB0805 02 001 - black / teal



Alpine TI Man

OB0808 00 002 - anthracite / grey



Dobermann JR Race

OB0830 01 001 - black / red



Freeride Pro Man

OB0805 01 001 - black / red



Freeride Unlimited

OB0840 00 001 - black / red



Alpine TI Woman

OB0808 00 002 - anthracite / aqua



Freeride Magnet

NEW
OB0860 00 001 - black / red



Primo Uni

OB0814 01 001 - white
OB0814 01 002 - grey



Alpine Performance

OB0824 00 764 - red / black
(prepack 25 + box)



Junior

OB0818 00 002 - red / black



Junior Girl

OB0820 00 002 - green / white



Rental

OB0622 00 001 - brushed



Freeride Magnet

NEW
OW2612 00 001 - black



Nordica Coach

OW2608 00 741 - black / red



Nordica Pro Rider

OW2609 00 744 - grey / red



Nordica Ranger

OW2610 00 001 - black / sand



Nordica Alper Light

OW2611 00 001 - black / grey



Dobermann Scuba

OW0403 00 001 - dark grey



Dobermann Long Sleeves

OW0304 00 001 - black



Dobermann T-Shirt

OW0303 00 001 - black



Dobermann Cap

OW0501 00 001 - black



Dobermann Beanie

OW0553 00 001 - black



Dobermann Rain Coat

OW0118 00 001 - dark grey



Dobermann Joggers

OW0200 00 001 - black



Comp 30 / 20

OC4140 00 001 - OC4142 00 001
DIN configuration:
15.0 - 30.0 (30) - 11.0 - 20.0 (20)



X-Comp 24 / 18

OC0160 00 001 - OC0162 00 001
DIN configuration:
12.0-24.0 (24) - 8.0-18.0 (18)



Comp 16 / 12

OC4144 00 001 - OC4146 00 001
DIN configuration:
6.0 - 16.0 (16) - 4.0 - 12.0 (12)



Comp 10 TCX / 10

OC4148 00 001 - OC4150 00 001
DIN configuration:
3.0 - 10.0



Comp Junior 8

OC4152 00 001
DIN configuration:
2.0 - 8.0



Duke PT 16

OC4155 00 001 (100mm)
OC4154 00 001 (125mm)
DIN configuration:
6.0 - 16.0



Duke PT 13

OC4156 00 001 (100mm)
OC4157 00 001 (125mm)
DIN configuration:
4.0 - 13.0



Duke PT 11

OC3215 00 001 (100mm)
OC3213 00 001 (125mm)
DIN configuration:
3.0-11.0



Jester 18 Pro ID

OC4158 00 001 (110mm)
OC4159 00 001 (120mm)
DIN configuration:
8.0 - 18.0



Jester 16 ID

OC3216 00 001 / 002 (100mm)
OC3218 00 001 / 002 (110mm)
DIN configuration:
6.0-16.0



Kingpin 10

OC2100 00 001 (75-100mm)
OC2101 00 001 (100-125mm)
DIN configuration:
5.0-10.0



Kingpin 13

OC2102 00 001 (75-100mm)
OC2103 00 001 (100-125mm)
DIN configuration:
6.0-13.0



Cruise 12

OC3225 00 001 (90mm)
OC3224 00 001 (105mm)
DIN configuration:
6.0-12.0



Cruise 10

OC3226 00 001 (90mm)
DIN configuration:
4.0-10.0



Alpinist 12

OC2104 00 001 (w/o brake)
OC2105 00 001 (90mm)
DIN configuration:
6.0-12.0



Alpinist 10

OC2106 00 001 (w/o brake)
OC2107 00 001 (90mm)
DIN configuration:
4.0-10.0



Alpinist 8

OC2108 00 001 (w/o brake)
OC2109 00 001 (90mm)
DIN configuration:
3.0-8.0



Alpinist long travel

OC2110 00 001 (12 w/o brake)
OC2111 00 001 (10 w/o brake)
DIN configuration:
6.0-12.0



Alpinist long travel 6

OC3227 00 001 (90mm)
DIN configuration:
2.0-6.0



Squire 11

OC1201 00 001 / 002 / 003 (90mm) - OC1202 00 001 / 002 / 003 (100mm)
OC1203 00 001 / 002 / 003 (110mm)
DIN configuration:
3.0-11.0



Squire 10-100

+ screw kit - OC3220 00 001
DIN configuration:
3.0-10.0



Squire 11 TCX D

OC1206 00 001 (90mm) - OC1204 00 001 (100mm) - OC1205 00 001 (110mm)
DIN configuration:
3.0-11.0

UYN®

UNLEASH YOUR NATURE

new



medium-temperature



high-intensity



U100396

UNISEX

SIZES: XS-S/M-L/XL-XXL

DESCRIPTION

Ewolucja ikony. Bielizna UYN przetestowana i rekomendowana przez czotowe reprezentacje narodowe na swiecie staje sie jeszcze potezniejsza. W nowa wersje koszulki UYN NATYON obnizylismy waga o 34% w porownaniu z poprzednim modelem, dzeki nowemu projektowi i wykorzystaniu przedy pochodzenia naturalnego Natex. W tym samym czasie bylismy w stanie zwiekszyc elastycznosc o 4% na jeszcze wiecej swobode ruchu. Oddychajacy obszar w technologii Gradual Coolvent powiekszyt sie o 58% na klatce piersiowej, plecach i pod pachami. Dzieki temu ciało pozostaje suche i ma stabilna temperature nawet podczas najbardziej stresujacych wyścigów. Testy w laboratorium i na stokach narciarskich sklonily nas do wprowadzenia nowych funkcji, takich jak Meta-Ribs na ramionach ktore stabilizuja i wspieraja miesnie ramion i Pressure Branches na łokciach, ktore chronia i odciążaja stawy. Ukierunkowana kompresja, bardziej intensywna na ramionach, wzmacnia krązenie krwi w celu zmniejszenia zmęczenia.

TECHNOLOGIES & MATERIALS

gradual-coolvent
meta-ribs
heatmemory
compression-chambers
hypermotion
natex

new



medium-temperature



high-intensity



U100388

UNISEX

SIZES: XS-S/M-L/XL-XXL

DESCRIPTION

Ewolucja ikony. Bielizna UYN przetestowana i polecana przez czołowe reprezentacje na świecie staje się jeszcze mocniejsza. W nowej wersji spodni UYN NATYON obniżyliśmy wagę o 34% w stosunku do poprzedniego modelu dzięki nowemu projektowi i zastosowaniu bio-włókna Natex. Jednocześnie udało nam się zwiększyć elastyczność o 4% dla jeszcze większej swobody ruchów. Testy w laboratorium i na stokach narciarskich pozwoliły nam wprowadzić nowe funkcje, takie jak Meta-Ribs na mięśniu czworogłowym uda, które stabilizują i wspierają mięśnie oraz Pressure Branches na kolanach, które chronią i zmniejszają nacisk na stawy. Ukierunkowana kompresja, bardziej intensywna w kończynach, wspomaga krążenie krwi w celu zmniejszenia zmęczenia.

TECHNOLOGIES & MATERIALS

heatmemory
compression-chambers
meta-ribs
natex

new



medium-temperature

T035



high-intensity

U100387

UNISEX

SIZES: XS-S/M-L/XL-XXL

DESCRIPTION

Ewolucja ikony. Bielizna UYN przetestowana i rekomendowana przez czołowe reprezentacje narodowe na świecie staje się jeszcze potężniejsza. W nową wersję koszulki UYN NATYON obniżyliśmy wagę o 34% w porównaniu z poprzednim modelem, dzięki nowemu projektowi i wykorzystaniu przędzy pochodzenia naturalnego Natex. W tym samym czasie byliśmy w stanie zwiększyć elastyczność o 4% na jeszcze większą swobodę ruchu. Oddychający obszar w technologii Gradual Coolvent powiększył się o 58% na klatce piersiowej, plecach i pod pachami. Dzięki temu ciało pozostaje suche i ma stabilną temperaturę nawet podczas najbardziej stresujących wyścigów. Testy w laboratorium i na stokach narciarskich skłoniły nas do wprowadzenia nowych funkcji, takich jak Meta-Ribs na ramionach które stabilizują i wspierają mięśnie ramion i Pressure Branches na łokciach, które chronią i odciążają stawy. Ukierunkowana kompresja, bardziej intensywna na ramionach, wzmacnia krążenie krwi w celu zmniejszenia zmęczenia.

TECHNOLOGIES & MATERIALS

gradual-coolvent
meta-ribs
heatmemory
compression-chambers
hypermotion
natex

new



medium-temperature



high-intensity

T035



U100388

UNISEX

SIZES: XS-S/M-L/XL-XXL

DESCRIPTION

Ewolucja ikony. Bielizna UYN przetestowana i polecana przez czołowe reprezentacje na świecie staje się jeszcze mocniejsza. W nowej wersji spodni UYN NATYON obniżyliśmy wagę o 34% w stosunku do poprzedniego modelu dzięki nowemu projektowi i zastosowaniu bio-włókna Natex. Jednocześnie udało nam się zwiększyć elastyczność o 4% dla jeszcze większej swobody ruchów. Testy w laboratorium i na stokach narciarskich pozwoliły nam wprowadzić nowe funkcje, takie jak Meta-Ribs na mięśniu czworogłowym uda, które stabilizują i wspierają mięśnie oraz Pressure Branches na kolanach, które chronią i zmniejszają nacisk na stawy. Ukierunkowana kompresja, bardziej intensywna w kończynach, wspomaga krążenie krwi w celu zmniejszenia zmęczenia.

**TECHNOLOGIES
& MATERIALS**

heatmemory
compression-chambers
meta-ribs
natex

new



medium-temperature



high-intensity

T023



U100389

UNISEX

SIZES: XS-S/M-L/XL-XXL

DESCRIPTION

Ewolucja ikony. Bielizna UYN przetestowana i rekomendowana przez czołowe reprezentacje narodowe na świecie staje się jeszcze potężniejsza. W nową wersję koszulki UYN NATYON obniżyliśmy wagę o 34% w porównaniu z poprzednim modelem, dzięki nowemu projektowi i wykorzystaniu przędzy pochodzenia naturalnego Natex. W tym samym czasie byliśmy w stanie zwiększyć elastyczność o 4% na jeszcze większą swobodę ruchu. Oddychający obszar w technologii Gradual Coolvent powiększył się o 58% na klatce piersiowej, plecach i pod pachami. Dzięki temu ciało pozostaje suche i ma stabilną temperaturę nawet podczas najbardziej stresujących wyścigów. Testy w laboratorium i na stokach narciarskich skłoniły nas do wprowadzenia nowych funkcji, takich jak Meta-Ribs na ramionach które stabilizują i wspierają mięśnie ramion i Pressure Branches na łokciach, które chronią i odciążają stawy. Ukierunkowana kompresja, bardziej intensywna na ramionach, wzmacnia krążenie krwi w celu zmniejszenia zmęczenia.

TECHNOLOGIES & MATERIALS

gradual-coolvent
meta-ribs
heatmemory
compression-chambers
hypermotion
natex

new



medium-temperature

T023



high-intensity

U100390

UNISEX

SIZES: XS-S/M-L/XL-XXL

DESCRIPTION

Ewolucja ikony. Bielizna UYN przetestowana i polecana przez czołowe reprezentacje na świecie staje się jeszcze mocniejsza. W nowej wersji spodni UYN NATYON obniżyliśmy wagę o 34% w stosunku do poprzedniego modelu dzięki nowemu projektowi i zastosowaniu bio-włókna Natex. Jednocześnie udało nam się zwiększyć elastyczność o 4% dla jeszcze większej swobody ruchów. Testy w laboratorium i na stokach narciarskich pozwoliły nam wprowadzić nowe funkcje, takie jak Meta-Ribs na mięśniu czworogłowym uda, które stabilizują i wspierają mięśnie oraz Pressure Branches na kolanach, które chronią i zmniejszają nacisk na stawy. Ukierunkowana kompresja, bardziej intensywna w kończynach, wspomaga krążenie krwi w celu zmniejszenia zmęczenia.

TECHNOLOGIES & MATERIALS

heatmemory
compression-chambers
meta-ribs
natex

new



medium-temperature



high-intensity

T024



U100391 MAN

SIZES: XS-S/M-L/XL-XXL

DESCRIPTION

Ewolucja ikony. Bielizna UYN przetestowana i rekomendowana przez czołowe reprezentacje narodowe na świecie staje się jeszcze potężniejsza. W nową wersję koszulki UYN NATYON obniżyliśmy wagę o 34% w porównaniu z poprzednim modelem, dzięki nowemu projektowi i wykorzystaniu przędzy pochodzenia naturalnego Natex. W tym samym czasie byliśmy w stanie zwiększyć elastyczność o 4% na jeszcze większą swobodę ruchu. Oddychający obszar w technologii Gradual Coolvent powiększył się o 58% na klatce piersiowej, plecach i pod pachami. Dzięki temu ciało pozostaje suche i ma stabilną temperaturę nawet podczas najbardziej stresujących wyścigów. Testy w laboratorium i na stokach narciarskich skłoniły nas do wprowadzenia nowych funkcji, takich jak Meta-Ribs na ramionach które stabilizują i wspierają mięśnie ramion i Pressure Branches na łokciach, które chronią i odciążają stawy. Ukierunkowana kompresja, bardziej intensywna na ramionach, wzmacnia krążenie krwi w celu zmniejszenia zmęczenia.

TECHNOLOGIES & MATERIALS

gradual-coolvent
meta-ribs
heatmemory
compression-chambers
hypermotion
natex

new



medium-temperature

T024



high-intensity

U100392 **MAN**

SIZES: XS-S/M-L/XL-XXL

DESCRIPTION

Ewolucja ikony. Bielizna UYN przetestowana i polecana przez czołowe reprezentacje na świecie staje się jeszcze mocniejsza. W nowej wersji spodni UYN NATYON obniżyliśmy wagę o 34% w stosunku do poprzedniego modelu dzięki nowemu projektowi i zastosowaniu bio-włókna Natex. Jednocześnie udało nam się zwiększyć elastyczność o 4% dla jeszcze większej swobody ruchów. Testy w laboratorium i na stokach narciarskich pozwoliły nam wprowadzić nowe funkcje, takie jak Meta-Ribs na mięśniu czworogłowym uda, które stabilizują i wspierają mięśnie oraz Pressure Branches na kolanach, które chronią i zmniejszają nacisk na stawy. Ukierunkowana kompresja, bardziej intensywna w kończynach, wspomaga krążenie krwi w celu zmniejszenia zmęczenia.

**TECHNOLOGIES
& MATERIALS**

heatmemory
compression-chambers
meta-ribs
natex

new



medium-temperature

T020



high-intensity

U100394

UNISEX

SIZES: XS-S/M-L/XL-XXL

DESCRIPTION

Ewolucja ikony. Bielizna UYN przetestowana i rekomendowana przez czołowe reprezentacje narodowe na świecie staje się jeszcze potężniejsza. W nową wersję koszulki UYN NATYON obniżyliśmy wagę o 34% w porównaniu z poprzednim modelem, dzięki nowemu projektowi i wykorzystaniu przędzy pochodzenia naturalnego Natex. W tym samym czasie byliśmy w stanie zwiększyć elastyczność o 4% na jeszcze większą swobodę ruchu. Oddychający obszar w technologii Gradual Coolvent powiększył się o 58% na klatce piersiowej, plecach i pod pachami. Dzięki temu ciało pozostaje suche i ma stabilną temperaturę nawet podczas najbardziej stresujących wyścigów. Testy w laboratorium i na stokach narciarskich skłoniły nas do wprowadzenia nowych funkcji, takich jak Meta-Ribs na ramionach które stabilizują i wspierają mięśnie ramion i Pressure Branches na łokciach, które chronią i odciążają stawy. Ukierunkowana kompresja, bardziej intensywna na ramionach, wzmacnia krążenie krwi w celu zmniejszenia zmęczenia.

TECHNOLOGIES & MATERIALS

gradual-coolvent
meta-ribs
heatmemory
compression-chambers
hypermotion
natex

new



medium-temperature

T020



high-intensity

U100400

UNISEX

SIZES: XS-S/M-L/XL-XXL

DESCRIPTION

Ewolucja ikony. Bielizna UYN przetestowana i polecana przez czołowe reprezentacje na świecie staje się jeszcze mocniejsza. W nowej wersji spodni UYN NATYON obniżyliśmy wagę o 34% w stosunku do poprzedniego modelu dzięki nowemu projektowi i zastosowaniu bio-włókna Natex. Jednocześnie udało nam się zwiększyć elastyczność o 4% dla jeszcze większej swobody ruchów. Testy w laboratorium i na stokach narciarskich pozwoliły nam wprowadzić nowe funkcje, takie jak Meta-Ribs na mięśniu czworogłowym uda, które stabilizują i wspierają mięśnie oraz Pressure Branches na kolanach, które chronią i zmniejszają nacisk na stawy. Ukierunkowana kompresja, bardziej intensywna w kończynach, wspomaga krążenie krwi w celu zmniejszenia zmęczenia.

TECHNOLOGIES & MATERIALS

heatmemory
compression-chambers
meta-ribs
natex

new



medium-temperature



high-intensity

T026



U100402

UNISEX

SIZES: XS-S/M-L/XL-XXL

DESCRIPTION

Ewolucja ikony. Bielizna UYN przetestowana i rekomendowana przez czołowe reprezentacje narodowe na świecie staje się jeszcze potężniejsza. W nową wersję koszulki UYN NATYON obniżyliśmy wagę o 34% w porównaniu z poprzednim modelem, dzięki nowemu projektowi i wykorzystaniu przędzy pochodzenia naturalnego Natex. W tym samym czasie byliśmy w stanie zwiększyć elastyczność o 4% na jeszcze większą swobodę ruchu. Oddychający obszar w technologii Gradual Coolvent powiększył się o 58% na klatce piersiowej, plecach i pod pachami. Dzięki temu ciało pozostaje suche i ma stabilną temperaturę nawet podczas najbardziej stresujących wyścigów. Testy w laboratorium i na stokach narciarskich skłoniły nas do wprowadzenia nowych funkcji, takich jak Meta-Ribs na ramionach które stabilizują i wspierają mięśnie ramion i Pressure Branches na łokciach, które chronią i odciążają stawy. Ukierunkowana kompresja, bardziej intensywna na ramionach, wzmacnia krążenie krwi w celu zmniejszenia zmęczenia.

TECHNOLOGIES & MATERIALS

gradual-coolvent
meta-ribs
heatmemory
compression-chambers
hypermotion
natex

new



medium-temperature

T026



high-intensity

U100403

UNISEX

SIZES: XS-S/M-L/XL-XXL

DESCRIPTION

Ewolucja ikony. Bielizna UYN przetestowana i polecana przez czołowe reprezentacje na świecie staje się jeszcze mocniejsza. W nowej wersji spodni UYN NATYON obniżyliśmy wagę o 34% w stosunku do poprzedniego modelu dzięki nowemu projektowi i zastosowaniu bio-włókna Natex. Jednocześnie udało nam się zwiększyć elastyczność o 4% dla jeszcze większej swobody ruchów. Testy w laboratorium i na stokach narciarskich pozwoliły nam wprowadzić nowe funkcje, takie jak Meta-Ribs na mięśniu czworogłowym uda, które stabilizują i wspierają mięśnie oraz Pressure Branches na kolanach, które chronią i zmniejszają nacisk na stawy. Ukierunkowana kompresja, bardziej intensywna w kończynach, wspomaga krążenie krwi w celu zmniejszenia zmęczenia.

TECHNOLOGIES & MATERIALS

heatmemory
compression-chambers
meta-ribs
natex

new



medium-temperature

T025



high-intensity

U100406

UNISEX

SIZES: XS-S/M-L/XL-XXL

DESCRIPTION

Ewolucja ikony. Bielizna UYN przetestowana i rekomendowana przez czołowe reprezentacje narodowe na świecie staje się jeszcze potężniejsza. W nową wersję koszulki UYN NATYON obniżyliśmy wagę o 34% w porównaniu z poprzednim modelem, dzięki nowemu projektowi i wykorzystaniu przędzy pochodzenia naturalnego Natex. W tym samym czasie byliśmy w stanie zwiększyć elastyczność o 4% na jeszcze większą swobodę ruchu. Oddychający obszar w technologii Gradual Coolvent powiększył się o 58% na klatce piersiowej, plecach i pod pachami. Dzięki temu ciało pozostaje suche i ma stabilną temperaturę nawet podczas najbardziej stresujących wyścigów. Testy w laboratorium i na stokach narciarskich skłoniły nas do wprowadzenia nowych funkcji, takich jak Meta-Ribs na ramionach które stabilizują i wspierają mięśnie ramion i Pressure Branches na łokciach, które chronią i odciążają stawy. Ukierunkowana kompresja, bardziej intensywna na ramionach, wzmacnia krążenie krwi w celu zmniejszenia zmęczenia.

TECHNOLOGIES & MATERIALS

gradual-coolvent
meta-ribs
heatmemory
compression-chambers
hypermotion
natex

new



medium-temperature

T025



high-intensity

U100407

UNISEX

SIZES: XS-S/M-L/XL-XXL

DESCRIPTION

Ewolucja ikony. Bielizna UYN przetestowana i polecana przez czołowe reprezentacje na świecie staje się jeszcze mocniejsza. W nowej wersji spodni UYN NATYON obniżyliśmy wagę o 34% w stosunku do poprzedniego modelu dzięki nowemu projektowi i zastosowaniu bio-włókna Natex. Jednocześnie udało nam się zwiększyć elastyczność o 4% dla jeszcze większej swobody ruchów. Testy w laboratorium i na stokach narciarskich pozwoliły nam wprowadzić nowe funkcje, takie jak Meta-Ribs na mięśniu czworogłowym uda, które stabilizują i wspierają mięśnie oraz Pressure Branches na kolanach, które chronią i zmniejszają nacisk na stawy. Ukierunkowana kompresja, bardziej intensywna w kończynach, wspomaga krążenie krwi w celu zmniejszenia zmęczenia.

TECHNOLOGIES & MATERIALS

heatmemory
compression-chambers
meta-ribs
natex

new



medium-insulation



T020



T027



T023



T121



T122



T035



S100307

UNISEX

SIZES: 35/38-39/41-42/44-45/47

DESCRIPTION

Dynamiczny design charakteryzuje nowe skarpety narciarskie Natyon, zapewniając zwiększone wsparcie i wydajność dzięki innowacyjnej technologii Zerocuff. Aby zwiększyć ochronę i amortyzację, UYN wprowadził system Shockwave, który rozkłada nacisk wzdłuż określonych linii 3D. Dzięki technologii Cool Air Flow utrzymują odpowiedni mikroklimat wokół stóp, nawet gdy temperatura jest niska.

TECHNOLOGIES & MATERIALS

zerocuff
intericor-ankle-guard
ergologic-footbed
target-compression-bandage
gripdynamic-concept
preshock-shield
cool-air-flow
shin-&-calf-protector
anatomical-cuff
feather-run-zone
light-compress-iq
texlyte-nano
airfeel

T026



T028



T064



T090



T046



T021





**MEDIUM
INSULATION**

medium-insulation

light-cushion

B119



E073



S100121 MAN

SIZES: 35/38-39/41-42/44-45/47

DESCRIPTION

Skarpety narciarskie Race Shape firmy UYN® są przeznaczone do dynamicznej jazdy na nartach. Idealnie dopasowują się i amortyzują wstrząsy, dzięki czemu stopa jest idealnie chroniona i wspierana. Materiał Natex, 100% nylonowe włókno pochodzenia roślinnego, gwarantuje optymalne zarządzanie klimatem.

**TECHNOLOGIES
& MATERIALS**

**intericor-ankle-guard
ergologic-footbed
target-compression-bandage
achilles-tendon-protector
shin-protector
zero-strangle-cuff
zerodor
natex**



**SKI COLLECTION
2024/2025**

DAINESE

ATHLETES



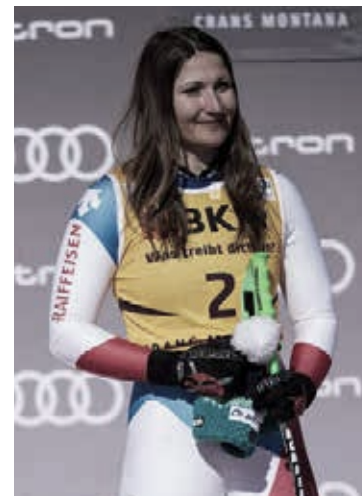
SOFIA GOGGIA



NICOL DELAGO



VALERIE GRENIER



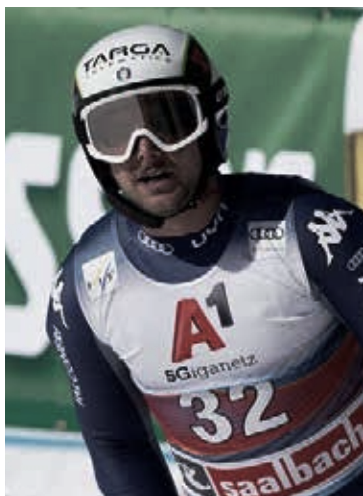
PRISKA NUFER



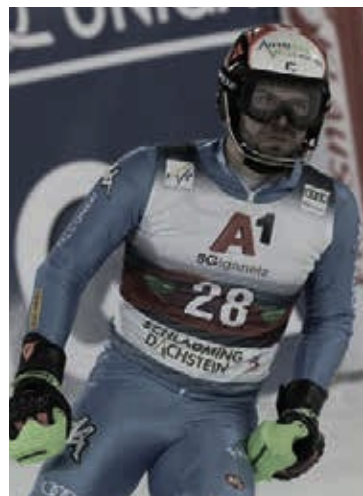
STEPHANIE BRUNNER



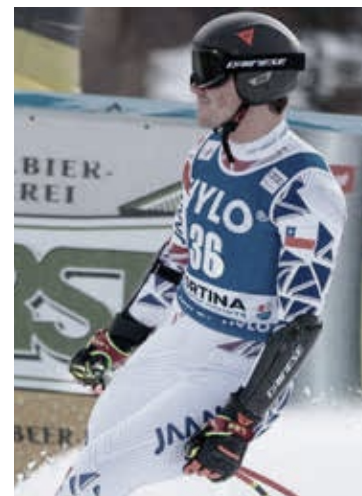
STEFANO GROSS



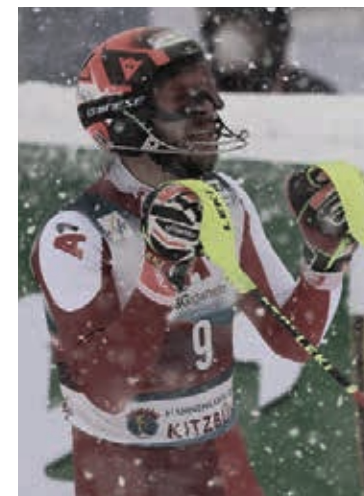
EMANUELE BUZZI



SIMON MAURBERGER

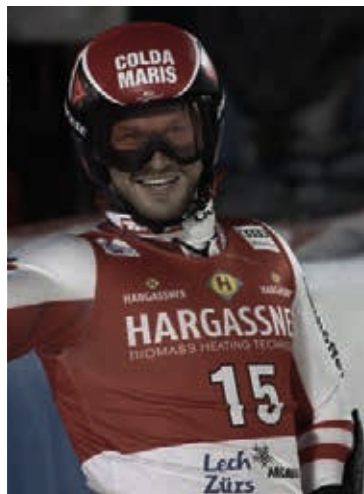


HENRIK VON APPEN

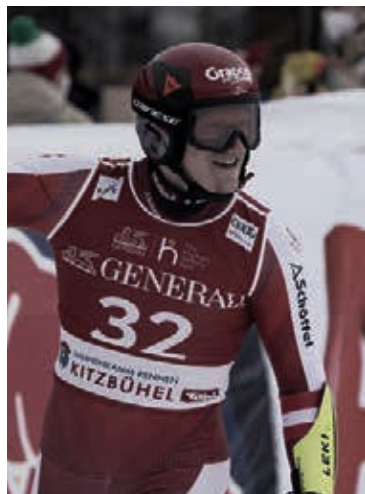


MICHAEL MATT

ATHLETES



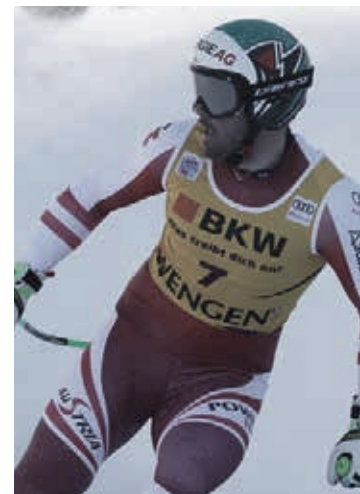
CHRISTIAN HIRSCHBUEHL



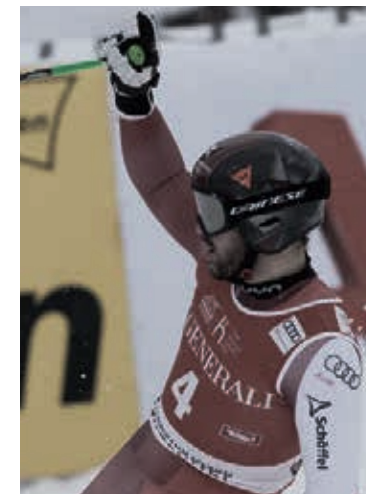
STEFAN BABINSKY



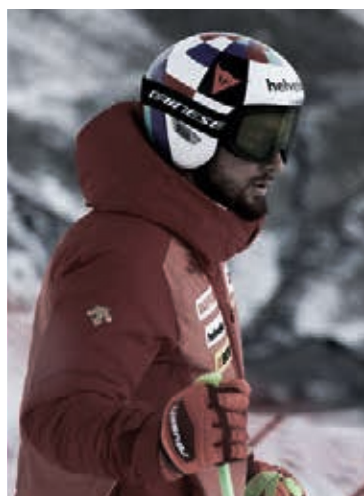
RAPHAEL HAASER



VINCENT KRIECHMAYR



DANIEL HEMETSBERGER



LUCA AERNI



LOIC MEILLARD



ADRIAN SEJERSTED

D-AIR SKI 2 MAN

NEW



PART NUMBER

204D300007

SIZES

XS - XXXL

The most cutting-edge ski protection system ever. Invisible, lightweight and ergonomic, Dainese D-air® Ski 2 is the most advanced electronic airbag system designed to protect professional skiers as well as Downhill and Super-G athletes. Imperceptible until activated, only when needed. Dainese D-air® Ski 2 offers the highest level of freedom and protection, for maximum performance on every descent and in the most extreme racing conditions. Dainese D-air® Ski 2 is the intelligent protection system used by Downhill and Super-G World Cup athletes. Owing to the synergetic interaction of accelerometers, gyroscopes and GPS – and to its sophisticated algorithm, developed over 20 years of experience in the most extreme environments – the electronic airbag system recognizes the dynamics of a fall and activates the Shield, an airbag with patented microfilament technology that ensures even protection over the athletes' entire chest area. Dainese D-air® Ski 2 airbag systems can activate up to three times before airbag replacement. The innovative D-air® FRS (Fast Replacement System) also allows wearers to replace the gas generator on their own after activation, which allows to quickly get back on the slope. Comfort and maximum protection over the back area are ensured by the back protector, which is comfortable and lightweight when worn, owing to its unique composition. The lightweight construction of D-air® Ski 2 offers maximum freedom of movement due to its ergonomic fit: The joint of the back protector's lower plates allows it to adapt to the athlete's body, so that it follows skiers' movements without hindrance and without creating any annoying bulk. PLEASE NOTE: D-air® SKI was developed exclusively for Super G and Downhill competitions. It is not designed or intended for use in non-competitive skiing or other competitive disciplines. We recommend the purchase of this product only to members of a recognized Ski Club or Ski Federation. If you are a registered athlete, you may be eligible for our racing program. PLEASE NOTE: D-AIR® PRODUCTS CANNOT BE RETURNED.



OVERVIEW

- D-air® Ski 2 is the most advanced electronic airbag system designed to protect World Cup, Downhill and Super-G athletes.

GENERAL TECHNICAL FEATURES

- Adjustable waistband
- Available in women specific fit
- Front zipper
- Led interface
- Pyrotechnic inflation
- Wireless Activation System

MATERIALS

- 100% Polyester (bag)
- Polypropylene back plates

SAFETY

- BACK

HOMOLOGATION

- CE EN 1621.2 Level 2
- FIS APPROVED

D-AIR SKI 2 WOMAN

NEW



PART NUMBER

204D300008

SIZES

XS - XL

The most cutting-edge ski protection system ever. Invisible, lightweight and ergonomic, Dainese D-air® Ski 2 is the most advanced electronic airbag system designed to protect professional skiers as well as Downhill and Super-G athletes. Imperceptible until activated, only when needed. Dainese D-air® Ski 2 offers the highest level of freedom and protection, for maximum performance on every descent and in the most extreme racing conditions. Dainese D-air® Ski 2 is the intelligent protection system used by Downhill and Super-G World Cup athletes. Owing to the synergetic interaction of accelerometers, gyroscopes and GPS – and to its sophisticated algorithm, developed over 20 years of experience in the most extreme environments – the electronic airbag system recognizes the dynamics of a fall and activates the Shield, an airbag with patented microfilament technology that ensures even protection over the athletes' entire chest area. Dainese D-air® Ski 2 airbag systems can activate up to three times before airbag replacement. The innovative D-air® FRS (Fast Replacement System) also allows wearers to replace the gas generator on their own after activation, which allows to quickly get back on the slope. Comfort and maximum protection over the back area are ensured by the back protector, which is comfortable and lightweight when worn, owing to its unique composition. The lightweight construction of D-air® Ski 2 offers maximum freedom of movement due to its ergonomic fit: The joint of the back protector's lower plates allows it to adapt to the athlete's body, so that it follows skiers' movements without hindrance and without creating any annoying bulk. PLEASE NOTE: D-air® SKI was developed exclusively for Super G and Downhill competitions. It is not designed or intended for use in non-competitive skiing or other competitive disciplines. We recommend the purchase of this product only to members of a recognized Ski Club or Ski Federation. If you are a registered athlete, you may be eligible for our racing program. PLEASE NOTE: D-AIR® PRODUCTS CANNOT BE RETURNED.



OVERVIEW

- D-air® Ski 2 is the most advanced electronic airbag system designed to protect World Cup, Downhill and Super-G athletes.

GENERAL TECHNICAL FEATURES

- Adjustable waistband
- Front zipper
- Led interface
- Pyrotechnic inflation
- Wireless Activation System

MATERIALS

- 100% Polyester (bag)
- Polypropylene back plates

SAFETY

- BACK

HOMOLOGATION

- CE EN 1621.2 Level 2
- FIS APPROVED

D-AIR SKI 2 MAN SHIELD REPLACEMENT

NEW

**PART NUMBER**

204D300009

SIZES

2

D-air® Ski 2 Shield 3X is the latest version of the D-air® airbag integrated into the Dainese ski airbag system. The Shield is built taking advantage of patented microfilament technology, which allows air to propagate uniformly within the bag and protect the entire coverage area evenly in case of a fall. The system D-air® Ski 2 Shield 3X is certified to support three airbag activations, with no need for replacement.

**GENERAL TECHNICAL FEATURES**

- Adjustable waistband
- Front zipper
- Pyrotechnic inflation
- Wireless Activation System

MATERIALS

- 100% Polyester (bag)
- Polypropylene back plates

SAFETY

- BACK

HOMOLOGATION

- CE EN 1621.2 Level 1
- FIS APPROVED

D-AIR SKI 2 WOMAN SHIELD REPLACEMENT

NEW

**PART NUMBER**

204D300010

SIZES

1

D-air® Ski 2 Shield 3X is the latest version of the D-air® airbag integrated into the Dainese ski airbag system. The Shield is built taking advantage of patented microfilament technology, which allows air to propagate uniformly within the bag and protect the entire coverage area evenly in case of a fall. The system D-air® Ski 2 Shield 3X is certified to support three airbag activations, with no need for replacement.

**GENERAL TECHNICAL FEATURES**

- Adjustable waistband
- Front zipper
- Pyrotechnic inflation
- Wireless Activation System

MATERIALS

- 100% Polyester (bag)
- Polypropylene back plates

SAFETY

- BACK

HOMOLOGATION

- CE EN 1621.2 Level 1
- FIS APPROVED

D-AIR SKI 2 GENERATOR REPLACEMENT**NEW****PART NUMBER**

204D300011

SIZES

N

Dainese D-air® FRS (Fast Replacement System) technology allows the user to remove and replace the gas generator of the Dainese D-air® Ski 2 system, autonomously and easily, without the need for official assistance. To get back to competition immediately, with the freedom you get from the highest level of protection.



FLEXAGON WAISTCOAT 2 MAN


 ADJUSTABLE
WAIST BAND


PART NUMBER

2048700003

SIZES

XS - XXXL

Flexagon redefines the standard of protective comfort with its innovative construction technology. The new version was restyled with a brand new fabric, capable to provide the skier with an unnoticed comfort to the touch and to breathe better than the previous fabric. The exceptional flexibility is aided by overlapping layers of Crash Absorb® memory foam that move independently of one another, and follow the anatomy of the body. Its ergonomic pattern of hexagon shaped soft pads provide comfort and maximum freedom of movement (6 sides, mobility on the 30°, 90° and 150° axes) along with effective protection.



47L
STRETCH LIMO/CASTLE ROCK



001
BLACK

GENERAL TECHNICAL FEATURES

- Adjustable waistband
- Chest Pads

COMPOSITION - INTERLINING FABRIC

- 100% Polyester

COMPOSITION - OUTER GARMENT

- 19% Elastane
- 81% Nylon

MATERIALS

- Carezza soft touch fabric
- Crash Absorb soft memory foam

HOMOLOGATION

- CE EN 1621.1 Lev 2

PROTECTION

- Flexagon Technology back protector

FIT

- Regular

FLEXAGON BACK PROTECTOR 2 MAN

← ADJUSTABLE WAIST BAND →



PART NUMBER

2048700004

SIZES

XS - XXXL

Flexagon redefines the standard of protective comfort with its innovative construction technology. The exceptional flexibility is aided by overlapping layers of Crash Absorb® memory foam that move independently of one another, and follow the anatomy of the body. Its ergonomic pattern of hexagon shaped soft pads provide comfort and maximum freedom of movement (6 sides, mobility on the 30°, 90° and 150° axes) along with effective protection.



OVERVIEW

- The Dainese Flexagon ski back protector redefines the standards of protective comfort.

ERGONOMICS

- Adjustable waist band

GENERAL TECHNICAL FEATURES

- Adjustable shoulder straps

MAIN MATERIALS

- Crash Absorb soft memory foam

SAFETY

- BACK

PROTECTION

- Flexagon Technology back protector

FLEXAGON WAISTCOAT 2 WMN

ADJUSTABLE
WAIST BAND



FLEXAGON

PART NUMBER

2048700005

SIZES

XS - XXL

Flexagon redefines the standard of protective comfort with its innovative construction technology. The new version was restyled with a brand new fabric, capable to provide the skier with an unnoticed comfort to the touch and to breathe better than the previous fabric. The exceptional flexibility is aided by overlapping layers of Crash Absorb® memory foam that move independently of one another, and follow the anatomy of the body. Its ergonomic pattern of hexagon shaped soft pads provide comfort and maximum freedom of movement (6 sides, mobility on the 30°, 90° and 150° axes) along with effective protection.



49L

SILVER FILIGREE/STRETCH LIMO



47L

STRETCH LIMO/CASTLE ROCK

OVERVIEW

- Certified Back Protector with the iconic Flexagon design, that ensure exceptional flexibility and impact resistance.

GENERAL TECHNICAL FEATURES

- Adjustable waistband
- Chest Pads

COMPOSITION - INTERLINING FABRIC

- 100% Polyester

COMPOSITION - OUTER GARMENT

- 19% Elastane
- 81% Nylon

MATERIALS

- Carezza soft touch fabric
- Crash Absorb soft memory foam

HOMOLOGATION

- CE EN 1621.2 Level 2

PROTECTION

- Flexagon Technology back protector

LENGTH

- Regular

FLEXAGON BACK PROTECTOR 2 WMN

← ADJUSTABLE WAIST BAND →



FLEXAGON

PART NUMBER

2048700006

SIZES

XS - XXL

Flexagon redefines the standard of protective comfort with its innovative construction technology. The exceptional flexibility is aided by overlapping layers of Crash Absorb® memory foam that move independently of one another, and follow the anatomy of the body. Its ergonomic pattern of hexagon shaped soft pads provide comfort and maximum freedom of movement (6 sides, mobility on the 30°, 90° and 150° axes) along with effective protection.



OVERVIEW

- The Dainese Flexagon ski back protector redefines the standards of protective comfort.

ERGONOMICS

- Adjustable waist band

GENERAL TECHNICAL FEATURES

- Adjustable shoulder straps

SAFETY

- BACK

HOMOLOGATION

- CE EN 1621.2 Level 2

MATERIALS

- Crash Absorb soft memory foam

PROTECTION

- Flexagon Technology back protector

JUNCTION WAVE 02



PART NUMBER

2048700011

SIZES

S - XL

A rigid back protector certified according to EN 1621.2 standard level 2, JUNCTION WAVE 02 is designed to ensure maximum lightness, ergonomics and ventilation. Designed with corrugated rigid external plates for greater distribution of the impact energy, absorbed by the plates themselves, and with a very light internal aluminum core with honeycomb structure and Crash Absorb®. Through the jointed plates, the completely revised lumbar joint, the perforation of the structure, the use of breathable fabrics and extensive adjustments, this protector ensures optimal ergonomics and maximum comfort even during the most extreme activities. Equipped with adjustable lumbar band and removable straps.



ERGONOMICS

- Adjustable and removable straps
- Double Adjustable lumbar band
- Liner in thermoformed polyethylene foam
- Lumbar joint

MAIN MATERIALS

- Backprotector with perimetral double density thermoformed support structure
- Inner core in aluminium Honeycomb frame and Crash Absorb®

PERFORMANCE SHOCK

- Back protector certified to CE - Cat. II - EN 1621.2/2014 lev. 2 Standard
- External polypropylene plates with perforated and waved structure

TEMPERATURE

- External perforated plates
- Liner inside back in polyester mesh fabric
- Lumbar strip liner and braces in double jersey

JUNCTION WAVE 03



PART NUMBER

2048700012

SIZES

S - XL

A rigid back protector certified according to EN 1621.2 standard level 2, JUNCTION WAVE 02 is designed to ensure maximum lightness, ergonomics and ventilation. Designed with corrugated rigid external plates for greater distribution of the impact energy, absorbed by the plates themselves, and with a very light internal aluminum core with honeycomb structure and Crash Absorb®. Through the jointed plates, the completely revised lumbar joint, the perforation of the structure, the use of breathable fabrics and extensive adjustments, this protector ensures optimal ergonomics and maximum comfort even during the most extreme activities. Equipped with adjustable lumbar band and removable straps.



ERGONOMICS

- Adjustable and removable straps
- Double Adjustable lumbar band
- Liner in thermoformed polyethylene foam
- Lumbar joint

MAIN MATERIALS

- Backprotector with perimetral double density thermoformed support structure
- Inner core in aluminium Honeycomb frame and Crash Absorb®

PERFORMANCE SHOCK

- Back protector certified to CE - Cat. II - EN 1621.2/2014 lev. 2 Standard
- External polypropylene plates with perforated and waved structure

TEMPERATURE

- External perforated plates
- Liner inside back in polyester mesh fabric
- Lumbar strip liner and braces in double jersey

R001 SJ

PART NUMBER

204876026

SIZES

XXS - XL

The R001 line was created to provide World Cup athletes with the most advanced technology in terms of performance, endurance and ergonomics. Maximum freedom of movement together with heightened safety, for the achievement of increasingly ambitious goals. The R001 SLALOM JACKET is designed specially to protect slalom athletes, providing maximum safety and freedom of movement between the poles. It is made of soft, breathable Carezza fabric, combined with elastic, anti-abrasion fabric inserts. The arms and shoulder blades are reinforced and covered with a protective layer of Memory Foam, able to absorb the force of the most violent impacts during training and competition. The slalom jacket is designed to be used in combination with a Dainese Flexagon or Auxagon back protector.



OVERVIEW

- Protective slalom jacket, made of breathable stretch fabric complete with Memory Foam reinforcements and protections on the arms and shoulder blades.

GENERAL TECHNICAL FEATURES

- Arm and forearm crash absorb cover
- Front zipper
- Shoulder blades cover

SAFETY

- BACK

MATERIALS

- Carezza soft touch fabric
- Crash Absorb soft memory foam

FLEX SHORTS MAN

PART NUMBER

204879995

SIZES

XS - XXL

It's the first time that Dainese introduces the Flexagon technology into a shorts, bringing the comfort to a superior level while still meeting highest european safety standards. Designed to meet the needs of most demanding skiers, these shorts feature the Flex Lite technology with two overlapping layers of Crash Absorb soft memory foam on the hips and on the coccyx zone which one moreover is removable. The fabric is soft to the touch and the inner elastic bands are reinforced with silicone grippers, in order to make the protector to stay in place even during most intense phases.

**OVERVIEW**

- Certified protective shorts made to satisfy most demanding safety needs.

GENERAL TECHNICAL FEATURES

- Elastic band with silicone gripper
- Removable coccyx protection

COMPOSITION - OUTER GARMENT

- 19% Elastane
- 81% Nylon

PROTECTION

- Flex Lite tailbone pad
- Flex Lite technology
- Flex Lite thigh pads

SAFETY

- KNEES

ACTION SHORTS EVO

PART NUMBER

204876010

SIZES

XS - XXL

The evolution of the action shorts, the ACTION SHORTS EVO were restyled with brand new fabric and anatomy. The shorts still feature ladderproof elasticated mesh with hard polypropylene plates on the coccyx and sides of the thighs (CE). PE shock absorbing inserts under the plate and silicone elasticated on the thigh to hold the shorts in place.

**OVERVIEW**

- Protective shorts featuring certified hard polypropylene plates on the coccyx and sides of the thighs

GENERAL TECHNICAL FEATURES

- Elastic band with silicone gripper

COMPOSITION - OUTER GARMENT

- 19% Elastane
- 81% Nylon

MATERIALS

- Carezza soft touch fabric
- Polypropylene tailbone pad
- Polypropylene thigh plate
- Soft hip pads

SHINGUARD MAN 2021 NEW WC CARBON

PART NUMBER

204876023

SIZES

M - L

Be protected against the roughest impacts with the best technology possible, made with carbon fiber, the WC CARBON SHIN GUARD accompanies the athletes during the races, protecting them with Italian racing style



OVERVIEW

- Dainese WC CARBON SHIN GUARD Ski Protection. Carbon fibre shin protectors for competition skiers.

GENERAL TECHNICAL FEATURES

- Calf straps with silicon grippers

MATERIALS

- 100% Carbon Fiber
- Crash Absorb soft memory foam

NEW WC CARBON SHIN GUARD LADY ATLETI

PART NUMBER

204879983

SIZES

M - L

Be protected against the roughest impacts with the best technology possible, made with carbon fiber, the WC CARBON SHIN GUARD accompanies the athletes during the races, protecting them with Italian racing style

OVERVIEW

- Dainese WC CARBON SHIN GUARD Ski Protection. Carbon fibre shin protectors for competition skiers.

GENERAL TECHNICAL FEATURES

- Calf straps with silicon grippers

MATERIALS

- 100% Carbon Fiber
- Crash Absorb soft memory foam



NEW WC CARBON ARM GUARD MAN ATLETI

PART NUMBER

204879980

SIZES

M - XL

Be protected against the roughest impacts with the best technology possible, made with carbon fiber, the WC CARBON ARM GUARD accompanies the athletes during the races, protecting them with Italian racing style



OVERVIEW

- Dainese WC CARBON ARM GUARD Ski Protection. Carbon fibre arm protectors for competition skiers.

GENERAL TECHNICAL FEATURES

- Forearm straps with silicone grippers

MATERIALS

- 100% Carbon Fiber
- Crash Absorb soft memory foam

NEW WC CARBON ARM GUARD LADY ATLETI

PART NUMBER

204879981

SIZES

M - L

Be protected against the roughest impacts with the best technology possible, made with carbon fiber, the WC CARBON ARM GUARD accompanies the athletes during the races, protecting them with Italian racing style



OVERVIEW

- Dainese WC CARBON ARM GUARD Ski Protection. Carbon fibre arm protectors for competition skiers.

GENERAL TECHNICAL FEATURES

- Forearm straps with silicone grippers

MATERIALS

- 100% Carbon Fiber
- Crash Absorb soft memory foam

R001 SHIN GUARD

PART NUMBER

204876030

SIZES

N

The R001 line was created to provide World Cup athletes with the most advanced technology in terms of performance, endurance and ergonomics. Maximum freedom of movement together with heightened safety, for the achievement of increasingly ambitious goals. The R001 SHIN GUARD is the racing shin guard in high density polypropylene derived directly from those used by Dainese athletes competing in the World Cup. It combines superior strength with great ease of use. The Memory Foam inner lining is designed to adhere perfectly to the boot, preventing it from sliding even in the event of a violent impact with a pole. The silicone straps allow for better grip and are designed to be easily adjusted while wearing gloves.



OVERVIEW

- Racing shin guard in polypropylene, with Memory Foam inner lining and silicone straps for easy adjustment while wearing gloves.

GENERAL TECHNICAL FEATURES

- Calf straps with silicon grippers

MATERIALS

- 100% High tenacity Polypropylene
- Crash Absorb soft memory foam

SAFETY

- KNEES

R001 FOREARM GUARD

PART NUMBER

204876031

SIZES

N

The R001 line was created to provide World Cup athletes with the most advanced technology in terms of performance, endurance and ergonomics. Maximum freedom of movement together with heightened safety, for the achievement of increasingly ambitious goals. The R001 FOREARM GUARD is the racing forearm guard in high density polypropylene derived directly from those used by Dainese athletes competing in the World Cup. It combines superior strength with great ease of use. The Memory Foam inner lining is designed to adhere perfectly to the arm, preventing it from sliding even in the event of a violent impact with a pole. The silicone straps allow for better grip and are designed to be easily adjusted while wearing gloves. The arm guard is designed to be cut and adapted to even the youngest skiers.



OVERVIEW

- Racing arm brace in polypropylene, with Memory Foam inner lining and silicone straps for easy adjustment while wearing gloves.

GENERAL TECHNICAL FEATURES

- Forearm straps with silicone grippers

MATERIALS

- 100% High tenacity Polypropylene
- Crash Absorb soft memory foam

SAFETY

- ELBOWS

KNEE GUARD GIANT 05

PART NUMBER

204879625

SIZES

N

MATERIALS

- Crash Absorb soft memory foam

SAFETY

- KNEES



SCARABEO R001 SJ

PART NUMBER

204876025

SIZES

JXS - JXL

The Dainese Scarabeo collection offers young skiers the technologies developed for World Cup athletes and used in international competition. All the safety of the professionals, to protect the champions of tomorrow. The SCARABEO R001 SLALOM JACKET provides young athletes with slalom protection, for maximum safety and freedom of movement between the poles. It is made of soft, breathable Carezza fabric, combined with elastic, anti-abrasion fabric inserts. The arms and shoulder blades are reinforced and covered with a protective layer of Memory Foam, able to absorb the force of the most violent impacts. The slalom jacket is designed to be used in combination with a Dainese Flexagon or Auxagon back protector. The R001 line was created to provide World Cup athletes with the most advanced technology in terms of performance, endurance and ergonomics. Maximum freedom of movement together with heightened safety, for the achievement of increasingly ambitious goals.



OVERVIEW

- Kids' protective slalom jacket, made of breathable stretch fabric complete with Memory Foam reinforcements and protections on the arms and shoulder blades.

GENERAL TECHNICAL FEATURES

- Arm and forearm crash absorb cover
- Front zipper
- Shoulder blades cover

MATERIALS

- Carezza soft touch fabric - 81% Nylon, 19% Elastam
- Crash Absorb soft memory foam

SAFETY

- ELBOWS

SCARABEO R001 SHIN GUARD

PART NUMBER

204876032

SIZES

N

The Dainese Scarabeo collection offers young skiers the technologies developed for World Cup athletes and used in international competition. All the safety of the professionals, to protect the champions of tomorrow. The R001 SHIN GUARD is the racing shin guard in high density polypropylene derived directly from those used by Dainese athletes competing in the World Cup. It combines superior strength with great ease of use. The Memory Foam inner lining is designed to adhere perfectly to the boot, preventing it from sliding even in the event of a violent impact with a pole. The silicone straps allow for better grip and are designed to be easily adjusted while wearing gloves. The R001 line was created to provide World Cup athletes with the most advanced technology in terms of performance, endurance and ergonomics. Maximum freedom of movement together with heightened safety, for the achievement of increasingly ambitious goals.



OVERVIEW

- Kids' racing shin guard in polypropylene, with Memory Foam inner lining and silicone straps for easy adjustment while wearing gloves.

GENERAL TECHNICAL FEATURES

- Calf straps with silicon grippers

MATERIALS

- 100% High tenacity Polypropylene
- Crash Absorb soft memory foam

SAFETY

- KNEES

SCARABEO FLEX SHORTS

PART NUMBER

204879996

SIZES

JS - JXL

It's the first time that Dainese introduces the Flexagon technology into a shorts, bringing the comfort to a superior level while still meeting highest european safety standards. Designed to meet the needs of most demanding skiers, these shorts feature the Flex Lite technology with two overlapping layers of Crash Absorb soft memory foam on the hips and on the coccyx zone which one moreover is removable. The fabric is soft to the touch and the inner elastic bands are reinforced with silicone grippers, in order to make the protector to stay in place even during most intense phases.



OVERVIEW

- Certified protective shorts made to satisfy most demanding safety needs.

GENERAL TECHNICAL FEATURES

- Elastic band with silicone gripper
- Removable coccyx protection

COMPOSITION - OUTER GARMENT

- 19% Elastane
- 81% Nylon

PROTECTION

- Flex Lite tailbone pad
- Flex Lite technology
- Flex Lite thigh pads

SAFETY

- KNEES

HP ERGOTEK PRO MITTEN GLOVES

PART NUMBER

204815950

SIZES

XXS - XXL

The HP ERGOTEK PRO mittens combine specialist experience on the Alpine Ski World Cup pistes with feedback from world-class athletes and Olympic champions. The mittens are made using innovative ERGOTEK technology, protecting your knuckles with independent ergonomically shaped plates, whilst allowing each finger to move with maximum freedom. Crafted from premium leather, they feature Super Fabric inserts and protective padding, guaranteeing maximum resistance against abrasion. Primaloft® padding provides superior thermal insulation. Designed to respond to the needs of the most demanding of skiers, these mittens offer the ultimate blend of ergonomics and safety, giving you the confidence you need to push yourself to your limits, even on the most challenging of pistes.



OVERVIEW

- Leather ski racing mittens with ERGOTEK protection and Primaloft® padding.

GENERAL TECHNICAL FEATURES

- ERGOTEK™ Knuckles Technology
- Full Leather
- Internal Fingers Lining
- Reinforced Thumb construction
- Super Fabric® reinforcements
- Wrist strap
- Wrist zip closure

MAIN MATERIALS

- Goatskin Leather
- PrimaLoft® insulation

MATERIALS

- Composite Knuckles
- SuperFabric®

ERGOTEK PRO MITTEN SOFIA GOGGIA

PART NUMBER

2048100006

SIZES

XXS - XXL

The HP ERGOTEK PRO SOFIA GOGGIA mittens combine specialist experience on the Alpine Ski World Cup pistes with feedback from world-class athletes and Olympic champions. The mittens are made using innovative ERGOTEK technology, protecting your knuckles with independent ergonomically shaped plates, whilst allowing each finger to move with maximum freedom. Crafted from premium leather, they feature Super Fabric inserts and protective padding, guaranteeing maximum resistance against abrasion. Primaloft® padding provides superior thermal insulation. Designed to respond to the needs of the most demanding of skiers, these mittens offer the ultimate blend of ergonomics and safety, giving you the confidence you need to push yourself to your limits, even on the most challenging of pistes.



9ZZ
WHITE-ITALY



OVERVIEW

- Leather ski racing mittens with ERGOTEK protection and Primaloft® padding

GENERAL TECHNICAL FEATURES

- ERGOTEK™ Knuckles Technology
- Super Fabric® reinforcements
- Reinforced Thumb construction
- Wrist zip closure
- Wrist strap
- Internal Fingers Lining
- Full Leather

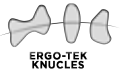
MAIN MATERIALS

- PrimaLoft® insulation
- Goatskin Leather

MATERIALS

- SuperFabric®
- Composite Knuckles

HP ERGOTEK GLOVES

D-THERMO
INSULATION**PART NUMBER**

204815952

SIZES

XS - XXL

Superior performance and exceptional comfort on the most challenging of pistes. Specially crafted to respond to the needs of Alpine Ski World Cup athletes, the HP ERGOTEK combine complete mobility with the protection of ERGOTEK composite plates, designed to protect the knuckles whilst allowing optimal freedom of movement. Their waterproof fabric and leather construction provides maximum comfort even during the harshest conditions. The confidence you need to perform to your best is in your hands.

**GENERAL TECHNICAL FEATURES**

- ERGOTEK™ Knuckles Technology
- Wrist strap
- Wrist zip closure

MAIN MATERIALS

- Goatskin Leather

MATERIALS

- Composite Knuckles
- D-Thermo insulation

HP GLOVES

PART NUMBER

204815947

SIZES

XS - XXL

Specially crafted to respond to all kinds of ski conditions, the HP gloves are waterproof and offer thermal insulation, allowing you to enjoy every day in the snow to the max, whatever the weather. Designed to fulfill the needs of the most demanding of skiers, these gloves offer optimal resistance and grip, thanks to their abrasion-resistant fabric construction and protective inserts on the palms and knuckles, inspired by Dainese motorcycle gear. Protection and sensitivity for superior performance.



81B

LILY-WHITE/STRETCH-LIMO



Y64

STRETCH-LIMO/STRETCH-LIMO

OVERVIEW

- Waterproof thermal ski gloves made from abrasion-resistant fabric.

CHARACTERISTICS

- Palm reinforcements

GENERAL TECHNICAL FEATURES

- Knuckles Protector
- Padded Thumb and fingers
- Waterproof
- Wrist strap

MAIN MATERIALS

- Leather

MATERIALS

- D-Thermo insulation

HP GLOVES SPORT

**PART NUMBER**

204815955

SIZES

XXXS - XXL

Garments in the HP collection are designed to offer maximum dexterity and freedom of movement on downhill slopes, as well as greater comfort and thermal insulation. Whatever the weather. The HP GLOVES SPORT are tested by World Cup athletes. They are constructed by combining premium leather and stretch fabric to offer total freedom of hand movement and maximum resistance in those parts of the glove most subject to stress in the case of a fall, such as the back and palm. The thermal insulation in Primaloft® Silver offers great protection from the coldest temperatures, allowing perfect breathability throughout all phases of activity. The short cut is very practical, offering the least possible interference with the jacket cuff, while the wrist strap allows for quick and easy fit adjustment even when wearing both gloves.

**606**

BLACK/RED

**601**

WHITE/BLACK

OVERVIEW

- Short ski gloves in leather and elastic fabric with Primaloft® Silver thermal insulation.

GENERAL TECHNICAL FEATURES

- Hybrid Body-Mapped Construction
- Palm reinforcements
- Wrist strap

MATERIALS

- 50% Goat Leather
- 50% Polyester
- PrimaLoft® insulation

R001 CARBON

PART NUMBER

204840385

SIZES

XS - XL

The R001 line was created to provide World Cup athletes with the most advanced technology in terms of performance, endurance and ergonomics. Maximum freedom of movement together with heightened safety, for the achievement of increasingly ambitious goals. The R001 CARBON is the helmet used by World Cup athletes. The latest evolution of the protection worn by Olympic champions. The benchmark for skiers in high-speed disciplines. The shell is made entirely of carbon fiber, a material that offers unbeatable impact resistance and protection at a very low weight. Its shape is molded for greater front and lateral aerodynamic performance. Together with the thick EPS inner shell, this construction exceeds the strictest CE, ASTM and FIS homologation standards. The interior comprises the Rabbit system and precious Shalimar fabric, anti-bacterial and anti-odor, as well as highly breathable and enveloping. The ear sections, with details in magnesium, copper and aluminum alloy, are designed to eliminate any rustling or secondary sound, allowing the athlete to fully concentrate during every phase of the performance. The micrometric closure guarantees the greatest possible precision and safety. The micrometric closure guarantees the highest safety standards.



OVERVIEW

- The Ski World Cup helmet. Maximum protection and lightness for high-speed disciplines, with a carbon fiber shell.

GENERAL TECHNICAL FEATURES

- Goggles fastening system
- Micrometric chin strap closure

MATERIALS

- 100% Carbon Fiber
- 100% EPS Inner shell
- 100% Shalimar Rabbit Liner

HOMOLOGATION

- ASTM F-2040 type A
- CE EN 1077 type A
- FIS RH 2013

R001 FIBER

PART NUMBER

204840384

SIZES

XS - XL

The R001 line was created to provide World Cup athletes with the most advanced technology in terms of performance, endurance and ergonomics. Maximum freedom of movement together with heightened safety, for the achievement of increasingly ambitious goals. The R001 FIBER is the fiberglass helmet inspired by the protection used by World Cup athletes. The shell is made entirely of fiberglass, lightweight, durable, and molded for aerodynamic performance at the sides and upper front. Together with the thick EPS inner shell, this construction exceeds the strictest CE, ASTM and FIS homologation standards. The interior comprises the Rabbit system and precious Shalimar fabric, anti-bacterial and anti-odor, as well as highly breathable and enveloping. The ear sections, with details in nylon and fiberglass, are designed to eliminate any rustling or secondary sound, allowing the athlete to fully concentrate during every phase of the performance. The micrometric closure guarantees the greatest possible precision and safety.



001
BLACK

GENERAL TECHNICAL FEATURES

- Goggles fastening system
- Micrometric chin strap closure

MATERIALS

- 100% EPS Inner shell
- 100% Fiberglass Shell
- 100% Shalimar Rabbit Liner

HOMOLOGATION

- ASTM F-2040 type A
- CE EN 1077 type A
- FIS RH 2013



R001 SOFIA GOGGIA**PART NUMBER**

2148490001

SIZES

XS - XL

The R001 line was created to provide World Cup athletes with the most advanced technology in terms of performance, endurance, and ergonomics. Maximum freedom of movement together with heightened safety, for the achievement of increasingly ambitious goals. R001 SOFIA GOGGIA is the fiberglass helmet inspired by the protection used by World Cup athletes. The shell is made entirely of fiberglass, lightweight, durable, and molded for aerodynamic performance at the sides and upper front. Together with the thick EPS inner shell, this construction exceeds the strictest CE, ASTM and FIS homologation standards. The interior comprises the Rabbit system and high-quality Shalimar fabric, anti-bacterial and anti-odor, as well as highly breathable and enveloping. The ear sections, with details in nylon and fiberglass, are designed to eliminate any rustling or secondary sound, allowing the athlete to fully concentrate during every phase of the performance. The micrometric closure guarantees the greatest possible precision and safety.

GENERAL TECHNICAL FEATURES

- Goggles fastening system
- Micrometric chin strap closure

MATERIALS

- 100% EPS Inner shell
- 100% Shalimar Rabbit Liner
- 100% Fiberglass Shell

HOMOLOGATION

- ASTM F-2040 type A
- CE EN 1077 type A
- FIS RH 2013



R001 CHINGUARD

PART NUMBER

204855610

SIZES

N

R001 Chin guard provides protection against slalom gates. Fits with R001 FIBER helmet.



HP HORIZON

PART NUMBER

204930000

SIZES

S - L

An ultra-wide field of vision combined with a Carl Zeiss® Multilayer lens: the ultimate goggles for the most challenging of slopes. Boasting an antifog treatment and upper and lower air vents, the HP HORIZON goggles offer superior ventilation. Quickly swap the lens for the antifog version to enjoy maximum visibility all day long.



82E

STRETCH-LIMO/BLUE



Y41
STRETCH-LIMO



81E
STRETCH-LIMO/SILVER



88B
LILY-WHITE

GENERAL TECHNICAL FEATURES

- 1x Extra fog lens
- Changeable lens
- Elastic band with silicone gripper
- Extreme field of view

MATERIALS

- Carl Zeiss® Fog lens S1
- Carl Zeiss® Multilayer lens S2

**SECOND LENS
INCLUDED**

HP HORIZON ASIAN FIT



PART NUMBER

204930001

SIZES

S - L

An ultra-wide field of vision combined with a Carl Zeiss® Multilayer lens: the ultimate goggles for the most challenging of slopes. Boasting an antifog treatment and upper and lower air vents, the HP HORIZON goggles offer superior ventilation. Quickly swap the lens for the antifog version to enjoy maximum visibility all day long.



82E

STRETCH-LIMO/BLUE



Y41
STRETCH-LIMO



81E
STRETCH-LIMO/SILVER



88B
LILY-WHITE

GENERAL TECHNICAL FEATURES

- 1x Extra fog lens
- Asian fit
- Changeable lens
- Elastic band with silicone gripper
- Extreme field of view

MATERIALS

- Carl Zeiss® Fog lens S1
- Carl Zeiss® Multilayer lens S2

**SECOND LENS
INCLUDED**

HP HO LENS CYLINDRICAL

PART NUMBER

204855589

SIZES

L

An ultra-wide field of vision combined with a Carl Zeiss® Multilayer lens: the ultimate goggles for the steepest of slopes. Zeiss® technology increases contrast and filters the light for faster, more accurate vision in the snow.



39C
PINK-GOLD



013
ORANGE



07F
SILVER-MIRROR



40C
ORANGE-GOLD



K77
BLUE-MIRROR

OVERVIEW

- Carl Zeiss® lens for HP Horizon goggles, offering increased contrast and filtered light.

CHARACTERISTICS

- Optics by Carl Zeiss Vision

MATERIALS

- Carl Zeiss Fog lens S1 (only col var. 013)
- Carl Zeiss Multilayer lens S3 (only col var. 07F)
- Carl Zeiss® Multilayer lens S2

SCARABEO ELEMENTO

PART NUMBER

204840401

SIZES

XS-S - S-M

Dainese SCARABEO ski helmets are designed around the heads of young skiers, encircling them and offering maximum protection, lightness and comfort, imperceptible protection so that little skiers can have fun in safety. SCARABEO ELEMENTO sets the standard for its category in terms of lightness and protection. Its durable and lightweight polycarbonate shell and EPS inner shell are able to absorb the most violent impacts, and exceed the strictest European and North American certification standards – CE EN 1077 type B and ASTM F-2040. Due to the compact design, they guarantee an extremely low helmet weight (only 380 g in size JS-JM). The large central ventilation holes are positioned at the point of greatest air pressure and allow the flow inside the helmet to be channeled, transporting excess moisture and heat to the outside. The inside of the helmet comprises a warm and breathable thermoformed lining, which makes the helmet very comfortable, allowing for the rapid absorption of sweat and moisture. Soft and breathable protectors allow the ears to be enveloped in comfort. The buckle closure ensures that it is durable and easy to operate even when wearing gloves. The rear mask clip is made of silicone, with a practical metal button that means the mask can easily be secured to the helmet. To enable multi-season use, it features fit adjustment (4 sizes) allowing you to follow the growth of little skiers and ensuring that the fit is always right and comfortable.



61H

METALLIC-RED/WHITE-LOGO



60H

METALLIC-RED/NARDO-GRAY



088

METALLIC-BLUE

GENERAL TECHNICAL FEATURES

- Goggles fastening system
- ITW Buckle
- Removable ear pads
- Rotor size micro adjustments
- Thermoformed, removable and washable liner

MATERIALS

- 100% EPS Inner shell
- 100% Polycarbonate

HOMOLOGATION

- ASTM F-2040
- CE EN 1077 type B



SCARABEO HORIZON

PART NUMBER

204930007

SIZES

S

The Dainese Scarabeo collection offers young skiers the technologies developed for World Cup athletes and used in international competition. All the safety of the professionals, to protect the champions of tomorrow. The SCARABEO HORIZON goggles combine an extremely wide field of vision with the quality of the Carl Zeiss® multi-layer lens, to tackle the most demanding descents in all conditions with maximum control. The antifog treatment and large upper and lower air vents, designed to interact perfectly with the air vents of Dainese Scarabeo helmets, offer the ideal balance inside the mask.

OVERVIEW

- Kids' ski mask with Carl Zeiss® multi-layer lens, wide field of vision, antifog treatment.

GENERAL TECHNICAL FEATURES

- Changeable lens
- Elastic band with silicone gripper
- Extreme field of view

MATERIALS

- Carl Zeiss® Multilayer lens S2



SCARABEO HORIZON SPARE LENS

PART NUMBER

204855609

SIZES

S

An ultra-wide field of vision combined with a Carl Zeiss® Multilayer lens: the ultimate goggles for the steepest of slopes. Zeiss® technology increases contrast and filters the light for faster, more accurate vision in the snow.



013
ORANGE

OVERVIEW

- Carl Zeiss® lens for SCARABEO Horizon goggles, offering increased contrast and filtered light.

CHARACTERISTICS

- Optics by Carl Zeiss Vision

MATERIALS

- Carl Zeiss Fog lens S1 (only col var. 013)
- Carl Zeiss Multilayer lens S3 (only col var. 07F)



07F
SILVER-MIRROR

SHRED.



SNOW | 2024 - 2025 | PERFORMANCE ENHANCING EYEWEAR, HELMETS, AND PROTECTION



GOGGLES



SNOW | 2024-2025



SHRED.

GRATIFY



CODE: GOGGRAN12B

LENS: CBL 2.0 GLACIER
VLT:7% - CAT:S4 | GLACIER

WITH POLARIZING FILTER

PURE WHITE
CBL 2.0 ICE

SHRED



SHRED

Are you searching for the best performing ski and snowboard goggle that defeats FLAT LIGHT while providing the widest field of vision in the game and a distinctive, sleek, and frameless cylindrical lens style? If so, SHRED. Gratify is your best choice. It offers superior fit and comfort and features our revolutionary CONTRAST BOOSTING LENS™ 2.0 (CBL 2.0)* technology to DEFEAT FLAT LIGHT and greatly enhance vision performance in ALL weather and light conditions. Combined with NODISTORTION™ technology, it maintains perfect image clarity and eliminates optical distortion at all altitudes. The SHRED.wide™ design ensures a maximized field of view, allowing you to see more of the mountain and its terrain. Boost your confidence and performance for endless fun up and down the mountains. SHRED. Gratify is compatible with most prescription glasses (OTG).

*Available in select models. Other models feature our original Contrast Boosting Lens™ (CBL), designed to enhance contrast and image definition compared with traditional lenses.

FEATURES:

SHRED. CONTRAST BOOSTING LENS™ 2.0 | Our proprietary, MIT-developed, ALL CONDITIONS Lens Tech System DEFEATS FLAT LIGHT, boosts contrast in low/flat light, and reduces glare in brightness. Choose from: ICE to DEFEAT FLAT LIGHT and enhance vision performance in ALL CONDITIONS, GLACIER to DEFEAT GLARE in Late Spring/Summer, NIGHTTIME to DEFEAT DARKNESS in Night/Artificial Light.

*Select models only. Others feature original CBL™ for enhanced contrast and clarity.

SHRED.wide™ | Goggles designed and engineered to maximize your field of view.

SHRED. NODISTORTION™ | Pressure regulation valve technology to provide crystal clear vision during altitude change..

SHRED. OTG | Designed to provide compatibility and comfort with prescription glasses.

SHRED. NOCLOG™ | Hydrophobic treatment on vents to reduce clogging from snow or water and help prevent fogging.

TECH SPECS:

LENS | Ultra-high-optical-precision molded, cylindrical double lenses with tapered thickness to optimize vision at all angles and enhance impact protection. | 100% UVA-UVB-UVC protection | Super Anti-Fog

FRAME | Width: 170 mm | Height: 100 mm

STRAP | Width: 50 mm | Triple silicone line backing | 2-point slide adjustment system

WEIGHT | 140 g

SUGGESTED FIT | S to L helmet size

IN THE BOX:

1 pair of SHRED. Gratify goggles | 1 SHRED. goggle soft case

SHRED. goggles packaging is 100% plastic free

VLT% IMPORTANT NOTICE | VLT% doesn't fully capture the human eye's experience with SHRED. Contrast Boosting Lens™ 2.0 Technologies. Unlike the human eye, it misses how the lens's polarization filter cuts glare and how the contrast enhancing formulations boost clarity and vision.



CODE: GOGRA011D

LENS: CBL 2.0 NIGHTTIME
VLT: 43% - CAT: S 1 | NIGHT
WITH POLARIZING FILTER

NEW

BLACK
CBL 2.0 NIGHTTIME



CODE: GOGRA012C

LENS: CBL 2.0 GLACIER
VLT: 7% - CAT: S4 | GLACIER
WITH POLARIZING FILTER

NEW

PURE WHITE
CBL 2.0 GLACIER



CODE: GOGRA011C

LENS: CBL 2.0 ICE MIRROR
VLT: 21% - CAT: S 2 | FLAT LIGHT TO SUN
WITH POLARIZING FILTER

BLACK
CBL 2.0 ICE



CODE: GOGRA013A

LENS: CBL 2.0 ICE MIRROR
VLT: 21% - CAT: S 2 | FLAT LIGHT TO SUN
WITH POLARIZING FILTER

LIGHTNING 
CBL 2.0 ICE



CODE: GOGRA021A

LENS: CBL 2.0 ICE MIRROR
VLT: 21% - CAT: S 2 | FLAT LIGHT TO SUN
WITH POLARIZING FILTER

NEW

BLACKOUT 
CBL 2.0 ICE



CODE: GOGRA022A

LENS: CBL 2.0 ICE MIRROR
VLT: 21% - CAT: S 2 | FLAT LIGHT TO SUN
WITH POLARIZING FILTER

NEW

BIGSHOW BLACK/RUST 
CBL 2.0 ICE



CODE: GOGRA024A

LENS: CBL 2.0 ICE MIRROR
VLT: 21% - CAT: S 2 | FLAT LIGHT TO SUN
WITH POLARIZING FILTER

NEW

LA TIGRE 
CBL 2.0 ICE



CODE: GOGRA015A

LENS: CBL 2.0 ICE MIRROR
VLT: 21% - CAT: S 2 | FLAT LIGHT TO SUN
WITH POLARIZING FILTER

FOG FLASH 
CBL 2.0 ICE



SIMPLIFY+



If you're looking for the ultimate ski and snowboard goggle to DEFEAT FLAT LIGHT, offering the widest field of vision in the game with a sleek, almost frameless cylindrical lens style, SHRED. Simplify is your top choice. It features our revolutionary CONTRAST BOOSTING LENS™ 2.0 (CBL 2.0)* technology to DEFEAT FLAT LIGHT and greatly enhance vision performance in ALL weather and light conditions. Combined with NODISTORTION™ technology, it maintains perfect image clarity and eliminates optical distortion at all altitudes. The SHRED. wide™ design ensures a maximized field of view, allowing you to see more of the mountain and its terrain. The 1-2-3 SHRED REPLACEMENT SYSTEM™ allows easy lens swapping. SHRED. Simplify is also OTG compatible, fitting over most prescription glasses.

*Available in select models. Other models feature our original Contrast Boosting Lens™ (CBL), designed to enhance contrast and image definition compared with traditional lenses.

FEATURES:

SHRED. CONTRAST BOOSTING LENS™ 2.0 | Our proprietary, MIT-developed, ALL CONDITIONS Lens Tech System DEFEATS FLAT LIGHT, boosts contrast in low/flat light, and reduces glare in brightness. Choose from: ICE to DEFEAT FLAT LIGHT and enhance vision performance in ALL CONDITIONS, GLACIER to DEFEAT GLARE in Late Spring/Summer, NIGHTTIME to DEFEAT DARKNESS in Night/Artificial Light.

*Select models only. Others feature original CBL™ for enhanced contrast and clarity.

SHRED.wide™ | Goggles designed and engineered to maximize your field of view.

SHRED. NODISTORTION™ | Pressure regulation valve technology to provide crystal clear vision during altitude change.

1-2-3 SHRED. REPLACEMENT SYSTEM™ | 3-step quick and easy lens replacement.

SHRED. OTG | Designed to provide compatibility and comfort with prescription glasses.

SHRED. NOCLOG™ | Hydrophobic treatment on vents to reduce clogging from snow or water and help prevent fogging.

TECH SPECS:

LENS | 2 Ultra-high-optical-precision molded, cylindrical double lenses with tapered thickness to optimize vision at all angles and enhance impact protection | 100% UVA-UVB-UVC protection | Super Anti-Fog

FRAME | Width: 195 mm | Height: 105 mm

STRAP | Width: 50 mm | Triple silicone line backing | 2-point slide adjustment system

WEIGHT | 175 g

IN THE BOX:

1 pair of SHRED. Simplify goggles | 1 SHRED. CBL™ bonus lens |

2 SHRED. goggle soft cases: one for your goggles and one for your bonus lens

SHRED. goggles packaging is 100% plastic free

VLT% IMPORTANT NOTICE | VLT% doesn't fully capture the human eye's experience with SHRED. Contrast Boosting Lens™ 2.0 Technologies. Unlike the human eye, it misses how the lens's polarization filter cuts glare and how the contrast enhancing formulations boost clarity and vision.



CODE: GOSIM011D

LENS 1: CBL 2.0 ICE MIRROR
VLT: 21% - CAT: S 2 | FLAT LIGHT TO SUN
WITH POLARIZING FILTER

NEW

BLACK
CBL 2.0 ICE + CBL 2.0 GLACIER



LENS 2: CBL 2.0 GLACIER
VLT: 7% - CAT: S4 | GLACIER
WITH POLARIZING FILTER



CODE: GOSIM033D

LENS 1: CBL 2.0 ICE MIRROR
VLT: 21% - CAT: S 2 | FLAT LIGHT TO SUN
WITH POLARIZING FILTER

NEW

PURE WHITE
CBL 2.0 ICE + CBL 2.0 NIGHTTIME



LENS 2: CBL 2.0 NIGHTTIME
VLT: 43% - CAT: S 1 | NIGHT
WITH POLARIZING FILTER



CODE: GOSIMM11B

LENS 1: CBL 2.0 ICE MIRROR
VLT: 21% - CAT: S 2 | FLAT LIGHT TO SUN
WITH POLARIZING FILTER

BLACK
CBL 2.0 ICE + CBL SKY



LENS 2: CBL SKY MIRROR
VLT: 45% - CAT: S 1 | SNOW AND
OVERCAST



CODE: GOSIMN33B

LENS 1: CBL 2.0 ICE MIRROR
VLT: 21% - CAT: S 2 | FLAT LIGHT TO SUN
WITH POLARIZING FILTER

PURE WHITE
CBL 2.0 ICE + CBL SKY



LENS 2: CBL SKY MIRROR
VLT: 45% - CAT: S 1 | SNOW AND
OVERCAST



CODE: GOSIMN36A

LENS 1: CBL 2.0 ICE MIRROR
VLT: 21% - CAT: S 2 | FLAT LIGHT TO SUN
WITH POLARIZING FILTER

FOG FLASH 
CBL 2.0 ICE + CBL SKY



LENS 2: CBL SKY MIRROR
VLT: 45% - CAT: S 1 | SNOW AND
OVERCAST



CODE: GOSIMN34A

LENS 1: CBL 2.0 ICE MIRROR
VLT: 21% - CAT: S 2 | FLAT LIGHT TO SUN
WITH POLARIZING FILTER

LIGHTNING 
CBL 2.0 ICE + CBL SKY



LENS 2: CBL SKY MIRROR
VLT: 45% - CAT: S 1 | SNOW AND
OVERCAST

SIMPLIFY



If you're looking for the ultimate ski and snowboard goggle to DEFEAT FLAT LIGHT, offering the widest field of vision in the game with a sleek, almost frameless cylindrical lens style, SHRED. Simplify is your top choice. It features our revolutionary CONTRAST BOOSTING LENS™ 2.0 (CBL 2.0)* technology to DEFEAT FLAT LIGHT and greatly enhance vision performance in ALL weather and light conditions. Combined with NODISTORTION™ technology, it maintains perfect image clarity and eliminates optical distortion at all altitudes. The SHRED. wide™ design ensures a maximized field of view, allowing you to see more of the mountain and its terrain. The 1-2-3 SHRED REPLACEMENT SYSTEM™ allows easy lens swapping. SHRED. Simplify is also OTG compatible, fitting over most prescription glasses.

*Available in select models. Other models feature our original Contrast Boosting Lens™ (CBL), designed to enhance contrast and image definition compared with traditional lenses.

FEATURES:

SHRED. CONTRAST BOOSTING LENS™ 2.0 | Our proprietary, MIT-developed, ALL CONDITIONS Lens Tech System DEFEATS FLAT LIGHT, boosts contrast in low/flat light, and reduces glare in brightness. Choose from: ICE to DEFEAT FLAT LIGHT and enhance vision performance in ALL CONDITIONS, GLACIER to DEFEAT GLARE in Late Spring/Summer, NIGHTTIME to DEFEAT DARKNESS in Night/Artificial Light.

*Select models only. Others feature original CBL™ for enhanced contrast and clarity.

SHRED.wide™ | Goggles designed and engineered to maximize your field of view.

SHRED. NODISTORTION™ | Pressure regulation valve technology to provide crystal clear vision during altitude change.

1-2-3 SHRED. REPLACEMENT SYSTEM™ | 3-step quick and easy lens replacement.

SHRED. OTG | Designed to provide compatibility and comfort with prescription glasses.

SHRED. NOCLOG™ | Hydrophobic treatment on vents to reduce clogging from snow or water and help prevent fogging.

TECH SPECS:

LENS | 2 Ultra-high-optical-precision molded, cylindrical double lenses with tapered thickness to optimize vision at all angles and enhance impact protection |

100% UVA-UVB-UVC protection | Super Anti-Fog

FRAME | Width: 195 mm | Height: 105 mm

STRAP | Width: 50 mm | Triple silicone line backing | 2-point slide adjustment system

WEIGHT | 175 g

IN THE BOX:

1 pair of SHRED. Simplify goggles | 1 SHRED. goggle soft case.

SHRED. goggles packaging is 100% plastic free

VLT% IMPORTANT NOTICE | VLT% doesn't fully capture the human eye's experience with SHRED. Contrast Boosting Lens™ 2.0 Technologies. Unlike the human eye, it misses how the lens's polarization filter cuts glare and how the contrast enhancing formulations boost clarity and vision.



CODE: GOSIM011C

LENS: CBL 2.0 NIGHTTIME
VLT: 43% - CAT:S 1 | NIGHT
WITH POLARIZING FILTER

NEW

BLACK
CBL 2.0 NIGHTTIME



CODE: GOSIM033C

LENS: CBL 2.0 GLACIER
VLT:7% - CAT:S4 | GLACIER
WITH POLARIZING FILTER

NEW

PURE WHITE
CBL 2.0 GLACIER



CODE: GOSIM041A

LENS: CBL 2.0 ICE MIRROR
VLT: 21% - CAT: S 2 | FLAT LIGHT TO SUN
WITH POLARIZING FILTER

NEW

BLACKOUT 
CBL 2.0 ICE



CODE: GOSIM042A

LENS: CBL 2.0 ICE MIRROR
VLT: 21% - CAT: S 2 | FLAT LIGHT TO SUN
WITH POLARIZING FILTER

NEW

BIGSHOW BLACK/RUST 
CBL 2.0 ICE



CODE: GOSIM044A

LENS: CBL 2.0 ICE MIRROR
VLT: 21% - CAT: S 2 | FLAT LIGHT TO SUN
WITH POLARIZING FILTER

NEW

LA TIGRE 
CBL 2.0 ICE

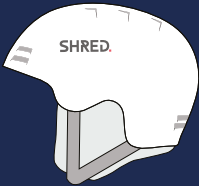




HELMETS



SNOW | 2024-2025



BASHER ULTIMATE

Are you a ski racer searching for the best-performing FIS-certified helmet that not only has the lowest profile, fits great, and looks amazing, but is also lightweight and offers unrivaled technology to address both rotational and linear energy absorption? Then the SHRED. Basher Ultimate is the perfect choice. Its ROTATIONAL ENERGY SYSTEM™ (RES)—which is the lightest and thinnest solution for addressing rotational forces—is paired with Casidion™—a nanotechnology-based impact liner that's thinner and lighter than those used in other racing helmets—to create an unparalleled synergy for combating linear and multi-directional forces. Charge with confidence and boost your performance, style, and fun.

FEATURES:

SHRED. ROTATIONAL ENERGY SYSTEM™ | Patent-pending technology that manages the effects of rotational accelerations to the head on impact by allowing a relative movement between the helmet and the head through the use of ultra-thin, multi-directional absorption units made with an elastic layer.

CASIDION™ | Revolutionary nanotech foam that goes beyond the performance of traditional materials. This absorption element offers protection even in the case of repeated impacts and provides an extraordinarily high impact absorption efficiency, allowing it to be thinner and lighter than other commonly used components.

XT2® | Anti-microbial technology to provide permanent odor protection.

FIS RH 2013 | Certified according to FIS RH 2013 ski racing helmet safety standards.

CUSTOM FIT KIT | An additional set of thicker pads and ear pieces to fine tune the helmet's fit.

SL CHIN GUARD | Fully compatible with SHRED. Hard-Ear Chin Guards. See page 49 for details.



TECH SPECS:

CONSTRUCTION | Tapered Hard Shell with CASIDION™ Nanotech

SAFETY STANDARDS | FIS RH 2013 | EN1077A (Europe snow hard ears) | ASTM F2040 (USA snow)

MATERIAL | SHRED. Shield toughened ABS | CASIDION Nanotech

FIS RH 2013 LABEL | This helmet carries the official FIS RH 2013 compliance label

WEIGHT | 615 g [Size S/M]

IN THE BOX:

1 SHRED. Basher Ultimate helmet | 1 SHRED. soft helmet bag | SHRED. Basher Ultimate

Custom Fit Kit (spare comfort pads and ear pads)

SHRED. helmets packaging is 100% plastic free.



BLACK

MATTE
SMALL/MEDIUM 53-56 cm
MEDIUM/LARGE 56-59 cm
LARGE/X-LARGE 60-63 cm

CODE: HEBSUJ11S
CODE: HEBSUJ11M
CODE: HEBSUJ11L



NIGHT FLASH

MATTE
SMALL/MEDIUM 53-56 cm
MEDIUM/LARGE 56-59 cm
LARGE/X-LARGE 60-63 cm

CODE: HEBSUM31S
CODE: HEBSUM31M
CODE: HEBSUM31L



FOG FLASH

MATTE
SMALL/MEDIUM 53-56 cm
MEDIUM/LARGE 56-59 cm

CODE: HEBSUN32S
CODE: HEBSUN32M



NEW

SEA FLASH

MATTE
SMALL/MEDIUM 53-56 cm
MEDIUM/LARGE 56-59 cm

CODE: HEBSU035S
CODE: HEBSU035M



NEW

CLOUD WHITE

MATTE
SMALL/MEDIUM 53-56 cm
MEDIUM/LARGE 56-59 cm

CODE: HEBSU034S
CODE: HEBSU034M



RIDER | TED LIGETY

PHOTO | JASON PETERS

BASHER



GLOSSY
SMALL 51-54 cm
MEDIUM 54-57.5 cm
LARGE 58-61 cm

BLACK

CODE: HEBSRJ15S
CODE: HEBSRJ15M
CODE: HEBSRJ15L



MATTE
SMALL 51-54 cm
MEDIUM 54-57.5 cm
LARGE 58-61 cm

CHARCOAL

CODE: HEBSRN16S
CODE: HEBSRN16M
CODE: HEBSRN16L

If you're a ski racer searching for an FIS certified helmet that offers the best performance and style and features unrivaled technology to address rotational energy absorption, then look no further than the SHRED. Basher. Its **ROTATIONAL ENERGY SYSTEM™ (RES)**—which is the lightest and thinnest solution for addressing rotational forces—is paired with the helmet's Impact Recovery Liner to create an exceptional synergy for combating linear and multi-directional forces. Thanks to the SHRED. Basher, you can charge with confidence and elevate your performance.

FEATURES:

SHRED. ROTATIONAL ENERGY SYSTEM™ | Patent-pending technology that manages the effects of rotational accelerations to the head on impact by allowing a relative movement between the helmet and the head through the use of ultra-thin, multi-directional absorption units made with an elastic layer.

IMPACT RECOVERY LINER | Tough and durable EPP absorption element to provide superior protection during multiple impacts within a single accident.

FIS RH 2013 | Certified according to FIS RH 2013 ski racing helmet safety standards.

CUSTOM FIT KIT | An additional set of thicker pads and ear pieces to fine tune the helmet's fit.

SL CHIN GUARD | Fully compatible with SHRED. Hard-Ear Chin Guards. See page 49 for details.



GLOSSY
SMALL 51-54 cm
MEDIUM 54-57.5 cm

mini

CODE: HEBSMK23S
CODE: HEBSMK23M

TECH SPECS:

CONSTRUCTION | Tapered Hard Shell

SAFETY STANDARDS | FIS RH 2013 | EN1077A (Europe snow hard ears) | ASTM F2040 (USA snow)

MATERIAL | SHRED. Shield toughened ABS | Impact recovery EPP

FIS RH 2013 LABEL | This helmet carries the official FIS RH 2013 compliance label

WEIGHT | 670 g [Size S]

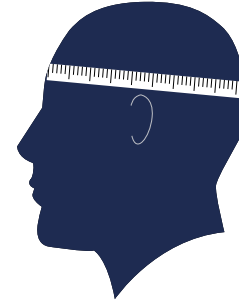
IN THE BOX:

1 SHRED. Basher helmet | 1 SHRED. soft helmet bag | SHRED. Basher Custom Fit Kit (spare comfort pads and ear pads)

SHRED. helmets packaging is 100% plastic free

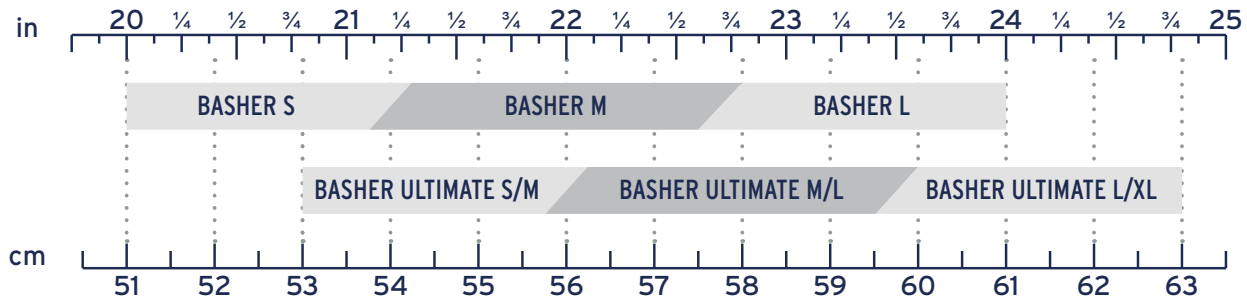
FIS HELMETS PURCHASE & SIZE GUIDE

		BASHER ULTIMATE	BASHER
CONSTRUCTION	HYBRID		
	IN-MOLD		
	HARD-SHELL	✓	✓
MAIN FEATURES	ROTATIONAL ENERGY SYSTEM™	✓	✓
	CASIDION NANOTECH SHIELDING™	✓	
	FIS STICKER	✓	✓
	XT2® FABRIC	✓	
	CUSTOM FIT KIT	✓	✓
	SLALOM CHIN GUARD COMPATIBLE	✓	✓
	SUGGESTED USE	Race	Race



Use a tape measure to find your head circumference. You should measure from the middle of the forehead above the ears to the back of the head.

We continuously adjust our size charts based on the feedback we receive from the market. For the latest size information on all of our products please visit shredoptics.com



HELMETS CHIN GUARDS AND SPARE PARTS



BLACK

HARD-EAR CHIN GUARD

CODE: ACHSCJA11

Compatible with Basher Ultimate, Basher and Basher Mini.



BLACK

SOFT-EAR CHIN GUARD

CODE: ACHSCJB11

Compatible with Totality NoShock, Totality, Half Brain.



CHINGUARD SCREWS KIT

CODE: SPHCSK12

Compatible with Totality NoShock, Totality, Totality Mini, Basher Ultimate, Basher, Basher Mini.



HELMET BAG

CODE: ACHEBN11

Compatible with SHRED. Snow and MTB helmets except Brain Box.



BASHER - GOGGLE CLIP KIT

CODE: SPHECL31

Compatible with Basher Ultimate, Basher, Basher Mini.



TOTALITY - GOGGLE CLIP KIT

CODE: SPHECL21

Compatible with Totality NoShock, Totality, Totality Mini.



NOTION - GOGGLE CLIP KIT

CODE: SPHECL41

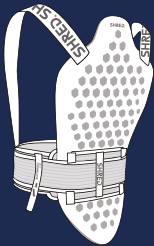
Compatible with Notion NoShock.



PROTECTION



SNOW | 2024-2025



SHRED.

NOSHOCK BACK PROTECTOR

If you continually push your limits and are looking for the highest level of protection and enhanced support, SHRED. NoShock Back Protector is just what you need. Their honeycomb-cone-structured SLYTECH™ SHOCK ABSORPTION provides the highest impact energy absorption performance (Level 2) and offers uncompromised comfort, flexibility, and ventilation. A 3-point belt also supports the lower back. Thanks to Shred's NoShock Back Protector, you can feel strong, confident, stoked, and in control.

FEATURES

SLYTECH™ SHOCK ABSORPTION | Our proprietary shock-absorbing material intelligently and progressively adapts to different forces and impact speeds for thorough protection—even in low energy crashes. Simply put, it stays flexible when you ride but hardens to protect you when you crash.

SLYTECH™ NOSHOCK | Patent-pending honeycomb cone structure that further increases the performance, safety, and comfort of our proprietary Slytech™ Shock Absorption by reducing weight and promoting ventilation.



NOSHOCK BACK PROTECTOR NAKED

PROTECTOR'S LENGTH

SMALL : 49 cm / 19 in
MEDIUM: 57 cm / 22 ½ in
LARGE: 62 cm / 24 ½ in
X-LARGE: 70 cm / 27 ½ in

CODE: BPNSNJ11S
CODE: BPNSNJ11M
CODE: BPNSNJ11L
CODE: BPNSNJ11XL

TECH SPECS:

CONSTRUCTION | Slytech™ Shock Absorption with NOSHOCK honeycomb cone structure | Grip on straps | 3-point belt
SAFETY STANDARDS | EN 1621-2 Level 2 FB (motorbike full back protectors) | Tested at -20°C
MATERIAL | Slytech™ Shock Absorption

IN THE BOX:

1 SHRED. NoShock Back Protector Naked

SPARE BELT

SMALL CODE: ACBBNJ11S
MEDIUM CODE: ACBBNJ11M
LARGE CODE: ACBBNJ11L
X-LARGE CODE: ACBBNJ11XL



TECH SPECS:

COMPATIBILITY | SHRED. NoShock Back Protector Naked | SHRED. Flexi Back Protector Naked
CONSTRUCTION | 3-Point for multiple fit options | Belt Connectors

IN THE BOX:

1 SHRED. Spare Back Protector Belt

This spare belt can be used as a replacement or if the waist strap on the back protector is too large or too small.

FLEXI BACK PROTECTORS

Are you searching for a back protector that offers maximum comfort so you can forget you're wearing protection until you truly need it? Then the SHRED. Flexi Back Protectors are the perfect choice. By using SLYTECH™ SHOCK ABSORPTION in the FLEXI hexagon structure, they're especially thin and light while also offering unrivaled flexibility and certified impact energy absorption performance (Level 1). Turn to the SHRED. Flexi Back Protectors for unconstrained confidence that enables you to push your limits, feel like a pro, and have fun.

FEATURES

SLYTECH™ SHOCK ABSORPTION | Our proprietary shock-absorbing material intelligently and progressively adapts to different forces and impact speeds for thorough protection—even in low energy crashes. Simply put, it stays flexible when you ride but hardens to protect you when you crash.

SLYTECH™ Flexi | Slytech™ Shock Absorption molded with a hexagon structure is especially thin and light while also offering unrivaled flexibility and certified impact energy absorption.



PROTECTOR'S LENGTH

X-SMALL: 42 cm / 16 ½ in
 SMALL: 46 cm / 18 in
 MEDIUM: 54 cm / 21 in
 LARGE: 54 cm / 21 in
 X-LARGE: 57.6 cm / 23 in

FLEXI BACK PROTECTOR NAKED

CODE: BPFXNJ11XS
 CODE: BPFXNJ11S
 CODE: BPFXNJ11M
 CODE: BPFXNJ11L
 CODE: BPFXNJ11XL

TECH SPECS:

CONSTRUCTION | Slytech™ Flexi structure | Grip on straps | Adjustable velcro belt

SAFETY STANDARDS | EN 1621-2 Level 1 CB (motorbike central back protectors) | Also tested at -20°C

MATERIAL | Slytech™ Shock Absorption

IN THE BOX:

1 SHRED. Flexi Back Protector Naked



PROTECTOR'S LENGTH

SMALL: 46 cm / 18 in
 MEDIUM: 54 cm / 21 in
 LARGE: 54 cm / 21 in
 X-LARGE: 57.6 cm / 23 in

FLEXI BACK PROTECTOR VEST ZIP

CODE: BPFVZJ11S
 CODE: BPFVZJ11M
 CODE: BPFVZJ11L
 CODE: BPFVZJ11XL

TECH SPECS:

CONSTRUCTION | Slytech™ Flexi structure |

Super stretch Nylon vest | Velcro adjustment on each side | Zipper

SAFETY STANDARDS | EN 1621-2 Level 1 CB (motorbike central back protectors) | Also tested at -20°C

MATERIAL | Slytech™ Shock Absorption

IN THE BOX:

1 SHRED. Flexi Back Protector Vest Zip

FLEXI BACK PROTECTOR MINI

Are you searching for a back protector that offers young skiers and snowboarders maximum comfort so they can forget they're wearing protection until they truly need it? Then the SHRED. Flexi Back Protector Mini is the perfect choice. By using SLYTECH™ SHOCK ABSORPTION in the FLEXI hexagon structure, it's especially thin and light while also offering unrivaled flexibility and certified impact energy absorption performance (Level 1). Turn to the SHRED. Flexi Back Protector Mini to help young riders boost their confidence, maximize their fun, and accelerate their progression.

FEATURES

SLYTECH™ SHOCK ABSORPTION | Our proprietary shock-absorbing material intelligently and progressively adapts to different forces and impact speeds for thorough protection—even in low energy crashes. Simply put, it stays flexible when you ride but hardens to protect you when you crash.

SLYTECH™ Flexi | Slytech™ Shock Absorption molded with a hexagon structure is especially thin and light while also offering unrivaled flexibility and certified impact energy absorption.



PROTECTOR'S LENGTH

XX-SMALL: 36 cm / 14 in

X-SMALL: 42 cm / 16 ½ in

FLEXI BACK PROTECTOR VEST MINI ZIP

CODE: BPFVMK11XXS

CODE: BPFVMK11XS

TECH SPECS:

CONSTRUCTION | Slytech™ Flexi structure | Super stretch nylon vest | Velcro adjustment on each side | Zipper

SAFETY STANDARDS | EN 1621-2 Level 1 CB (motorbike central back protectors) | Also tested at -20°C

MATERIAL | Slytech™ Shock Absorption

IN THE BOX:

1 SHRED. Flexi Back Protector Vest Mini Zip

PROTECTIVE SHORTS

Are you a skier or snowboarder searching for lower body protection with such a low profile you can forget you're wearing it until you truly need it? The SHRED. Protective Shorts are the perfect choice. Their honeycomb-cone-structured SLYTECH™ SHOCK ABSORPTION is specifically developed for lower body protection and provides the highest impact energy absorption performance while their Super-stretch Nylon fabric adapts to every move you make. If you're wearing the shorts with a back protector, you can also remove their lower back and coccyx pads to maximize comfort. Get uncompromised protection and comfort to reach the next level and have fun.

FEATURES

SLYTECH™ SHOCK ABSORPTION | Our proprietary shock-absorbing material intelligently and progressively adapts to different forces and impact speeds for thorough protection—even in low energy crashes. Simply put, it stays flexible when you ride but hardens to protect you when you crash.

SLYTECH™ NOSHOCK | Patent-pending honeycomb cone structure that further increases the performance, safety, and comfort of our proprietary Slytech™ Shock Absorption by reducing weight and promoting ventilation.



PROTECTIVE SHORTS

SMALL	CODE: PENSHJ11S
MEDIUM	CODE: PENSHJ11M
LARGE	CODE: PENSHJ11L
X-LARGE	CODE: PENSHJ11XL

TECH SPECS:

CONSTRUCTION | Slytech™ Shock Absorption with NOSHOCK honeycomb cone structure | Super Stretch Nylon fabric

SAFETY STANDARDS | Conforms to EU 2016/425 Personal Protective Equipment standard, category 1

MATERIAL | Slytech™ Shock Absorption | Nylon fabric

IN THE BOX:

1 SHRED. Protective Shorts

FLEXI ELBOW AND KNEE PADS

If you're a skier or snowboarder searching for more protection, the SHRED. Flexi Elbow and Knee Pads Lite are the perfect addition to your kit thanks to their unrivaled comfort, mobility, protection, and pedalability. Their SLYTECH™ SHOCK ABSORPTION protective element molds to your skin to match every move you make and is exceptionally thin, flexible, light, and breathable. Anatomically-shaped Spandex stretch sleeves securely hold the pads in place and Armortex® fabric over the protective element provides abrasion and puncture resistance. Get the confidence you need to feel like a pro and have fun.

FEATURES

SLYTECH™ SHOCK ABSORPTION | Our proprietary shock-absorbing material intelligently and progressively adapts to different forces and impact speeds for thorough protection—even in low energy crashes. Simply put, it stays flexible when you ride but hardens to protect you when you crash.

SLYTECH™ Flexi | Slytech™ Shock Absorption molded with a hexagon structure is especially thin and light while also offering unrivaled flexibility and certified impact energy absorption.

ARMORTEX® | This tough, elastic fabric on the front panels of the pads enhances durability, offering protection from abrasion and punctures while also stretching to provide comfort and a refined fit.



FLEXI ELBOW PADS LITE

SMALL CODE: PDFELJ11S
MEDIUM CODE: PDFELJ11M
LARGE CODE: PDFELJ11L
X-LARGE CODE: PDFELJ11XL

TECH SPECS:

CONSTRUCTION | Slytech™ Flexi structure | Super Stretch Spandex fabric with Armortex® front panel

SAFETY STANDARDS | EN 1621-1 Level 1 (motorbike limb joint protectors), E Type A

MATERIAL | Slytech™ Shock Absorption | Armortex® | Spandex

IN THE BOX:

1 SHRED. Flexi Elbow Pads



FLEXI KNEE PADS LITE

X-SMALL CODE: PDFKLK11XS
SMALL CODE: PDFKLJ11S
MEDIUM CODE: PDFKLJ11M
LARGE CODE: PDFKLJ11L
X-LARGE CODE: PDFKLJ11XL

TECH SPECS:

CONSTRUCTION | Slytech™ Flexi structure | Super Stretch Spandex fabric with Armortex® front panel

SAFETY STANDARDS | EN 1621-1 Level 1 (motorbike limb joint protectors), K Type A

MATERIAL | Slytech™ Shock Absorption | Armortex® | Spandex

IN THE BOX:

1 SHRED. Flexi Knee Pads

SKI RACE PROTECTIVE GLOVES

If you're a ski racer looking for a pair of gloves or mittens that protect the back of your hands and your thumbs while providing unparalleled abrasion resistance and durability, the SHRED. Ski Race Protective Gloves or the SHRED. Ski Race Protective Mittens are the perfect choice. Their SLYTECH™ Foam offers unrivaled impact energy absorption around your knuckles and thumb while PRIMALOFT® insulation provides exceptional warmth. The gloves also feature SUPERFABRIC® armor plates on the back of the hand, overlay panels for compatibility with arm guards, a tacky grip layer on the palm, and a nose wipe for additional comfort. Ski with confidence and unleash your potential.

FEATURES:

SLYTECH™ SHOCK ABSORPTION | Our proprietary foam intelligently and progressively adapts to different forces and impact speeds for thorough protection—even in low energy crashes. Simply put, it stays flexible when you ride but hardens to protect you when you crash.

PRIMALOFT® insulation | Ultra-fine microfiber insulation that is warm, soft, and lightweight.

THUMB PROTECTION | Strategically placed Slytech™ Shock Absorption pads to protect against skier's thumb

SUPERFABRIC® | SuperFabric armor plates for unrivaled durability and abrasion resistance.

TACKY GRIP™ | Specially formulated leather to provide unparalleled grip on poles.



SKI RACE PROTECTIVE MITTENS

X-SMALL	CODE: BPRDMN13XS
SMALL	CODE: BPRDMN13S
MEDIUM	CODE: BPRDMN13M
LARGE	CODE: BPRDMN13L
X-LARGE	CODE: BPRDMN13XL

TECH SPECS:

CONSTRUCTION | Knuckle and thumb protection with SLYTECH™ Foam | SuperFabric® inserts | Soft fleece nose wipe | Wrist overlay panel for compatibility with arm guards

MATERIAL | SLYTECH™ Foam | SUPERFABRIC® | PRIMALOFT® insulation | Tacky Grip™

IN THE BOX:

1 SHRED. Ski Race Protective Mittens



SKI RACE PROTECTIVE GLOVES

X-SMALL	CODE: BPRDGN13XS
SMALL	CODE: BPRDGN13S
MEDIUM	CODE: BPRDGN13M
LARGE	CODE: BPRDGN13L
X-LARGE	CODE: BPRDGN13XL

TECH SPECS:

CONSTRUCTION | Knuckle and thumb protection with SLYTECH™ Foam | SuperFabric® inserts | Soft fleece nose wipe | Wrist overlay panel for compatibility with arm guards

MATERIAL | SLYTECH™ Foam | SUPERFABRIC® | PRIMALOFT® insulation | Tacky Grip™

IN THE BOX:

1 SHRED. Ski Race Protective Gloves

SKI RACE PROTECTIVE GLOVES MINI

Are you looking for a pair of ski race gloves or mittens for your little racer that suit small hands and can protect them while providing abrasion resistance and durability? Then the SHRED. Ski Race Protective Gloves or Mittens Mini are the perfect choice. Their SLYTECH™ Foam offers unrivaled impact energy absorption around your knuckles and thumb while PRIMALOFT® insulation provides exceptional warmth. The gloves and mittens also feature overlay panels for compatibility with arm guards and a nose wipe for additional comfort. Ski with confidence and unleash your potential.

FEATURES:

SLYTECH™ SHOCK ABSORPTION | Our proprietary foam intelligently and progressively adapts to different forces and impact speeds for thorough protection—even in low energy crashes. Simply put, it stays flexible when you ride but hardens to protect you when you crash.

PRIMALOFT® insulation | Ultra-fine microfiber insulation that is warm, soft, and lightweight.

THUMB PROTECTION | Strategically placed Slytech™ Shock Absorption pads to protect against skier's thumb

CORDURA® | Tough and durable fabrics to provide extra abrasion resistance

GRIP CONTROL™ | Tacky leather to enhance grip on skis, board, and poles.



XX-SMALL
X-SMALL

SKI RACE PROTECTIVE MITTENS MINI

CODE: BPRMMN13XXS
CODE: BPRMMN13XS

TECH SPECS:

CONSTRUCTION | Knuckle and thumb protection with SLYTECH™ Foam | Cordura® inserts | Soft fleece nose wipe |

Wrist overlay panel for compatibility with arm guards

MATERIAL | SLYTECH™ Foam | Cordura® | PRIMALOFT® insulation | GRIP Control

IN THE BOX:

1 SHRED. Ski Race Protective Mittens Mini



XX-SMALL
X-SMALL

SKI RACE PROTECTIVE GLOVES MINI

CODE: BPRGMN13XXS
CODE: BPRGMN13XS

TECH SPECS:

CONSTRUCTION | Knuckle and thumb protection with SLYTECH™ Foam | Cordura® inserts | Soft fleece nose wipe |

Wrist overlay panel for compatibility with arm guards

MATERIAL | SLYTECH™ Foam | Cordura® | PRIMALOFT® insulation | GRIP Control

IN THE BOX:

1 SHRED. Ski Race Protective Gloves Mini

SKI RACE PROTECTION

SNOW | 2024-2025



SHRED.

CARBON SHIN GUARDS

If you're a ski racer looking for unrivaled performance when you clear slalom gates, SHRED. Carbon Shin Guards are the perfect choice. Their SLYTECH™ SHIELD CARBON advanced composite material provides exceptional protection and features ADVANCED GATE GLIDE technology to minimize friction. And to stay in place, they sport SHRED. GRIP PADS. With their unparalleled shin protection and gate clearing speed, the SHRED. Carbon Shin Guards provide the confidence you need to focus on your skiing and feel like a pro.

FEATURES:

SLYTECH™ SHIELD CARBON | A high performance material blend that combines carbon fiber technology and our SLYTECH™ SHIELD CARBON material to create shells that are extraordinarily durable yet lightweight and that provide the best performance at all temperatures.

ADVANCED GATE GLIDE™ | NOFRICTION PTFE™ technology blends PTFE into the SLYTECH™ SHIELD CARBON composite material. This serves as a lubricant, reducing friction and drag between the guard and gates to boost speed.



SHIN GUARDS CARBON/RUST - S

CODE: GUSGCM12S

TECH SPECS:

MATERIAL | SLYTECH™ SHIELD CARBON shell | SHRED. GRIP PADS
STRAPS WIDTH | 40 mm / 1.6 in
LENGTH | 31 cm / 12 ¼ in

IN THE BOX: 1 SHRED. Shin Guards S



SHIN GUARDS CARBON/RUST - M

CODE: GUSGCM12M

TECH SPECS:

MATERIAL | SLYTECH™ SHIELD CARBON shell | SHRED. GRIP PADS
STRAPS WIDTH | 40 mm / 1.6 in
LENGTH | 38cm / 15 in

IN THE BOX: 1 SHRED. Carbon Shin Guards M



SHIN GUARDS CARBON/RUST - L

CODE: GUSGCM12L

TECH SPECS:

MATERIAL | SLYTECH™ SHIELD CARBON shell | SHRED. GRIP PADS
STRAPS WIDTH | 40 mm / 1.6 in
LENGTH | 42 cm / 16 ½ in

IN THE BOX: 1 SHRED. Carbon Shin Guards L



SHIN GUARDS CARBON/RUST - PRO

CODE: GUSGCM12P

TECH SPECS:

MATERIAL | SLYTECH™ SHIELD CARBON shell | SHRED. GRIP PADS
STRAPS WIDTH | 40 mm / 1.6 in
LENGTH | 43 cm / 17 in

IN THE BOX: 1 SHRED. Carbon Shin Guards Pro

CARBON ARM GUARDS

If you're a ski racer looking for unrivaled performance when you clear giant slalom and super-G gates, SHRED. Carbon Arm Guards are the perfect choice. Their SLYTECH™ SHIELD CARBON advanced composite material provides exceptional protection and features ADVANCED GATE GLIDE technology to minimize friction. And to stay in place, they sport SHRED. GRIP PADS. With their unparalleled forearm protection and gate clearing speed, the SHRED. Carbon Arm Guards provide the confidence you need to focus on your skiing and feel like a pro.

FEATURES:

SLYTECH™ SHIELD CARBON | A high performance material blend that combines carbon fiber technology and our SLYTECH™ SHIELD CARBON material to create shells that are extraordinarily durable yet lightweight and that provide the best performance at all temperatures.

ADVANCED GATE GLIDE™ | NOFRICTION PTFE™ technology blends PTFE into the SLYTECH™ SHIELD CARBON composite material. This serves as a lubricant, reducing friction and drag between the guard and gates to boost speed.



CARBON ARM GUARDS CARBON/RUST - S

CODE: GUAGCM12S

TECH SPECS:

MATERIAL | SLYTECH™ SHIELD CARBON shell | SHRED. GRIP PADS

STRAPS WIDTH | 30 mm [main] | 10 mm [front]

1.18 in [main] | 0.4 in [front]

LENGTH | 25 cm / 9 ¾ in

IN THE BOX:

1 SHRED. Carbon Arm Guards S



CARBON ARM GUARDS CARBON/RUST - M

CODE: GUAGCM12M

TECH SPECS:

MATERIAL | SLYTECH™ SHIELD CARBON shell | SHRED. GRIP PADS

STRAPS WIDTH | 30 mm [main] | 10 mm [front]

1.18 in [main] | 0.4 in [front]

LENGTH | 27.5 cm / 10 ¾ in

IN THE BOX:

1 SHRED. Carbon Arm Guards M



CARBON ARM GUARDS CARBON/RUST - L

CODE: GUAGCM12L

TECH SPECS:

MATERIAL | SLYTECH™ SHIELD CARBON shell | SHRED. GRIP PADS

STRAPS WIDTH | 30 mm [main] | 10 mm [front]

1.18 in [main] | 0.4 in [front]

LENGTH | 30.5 cm / 12 in

IN THE BOX:

1 SHRED. Carbon Arm Guards L



SHIN GUARDS

If you're a ski racer looking for exceptional performance when you clear slalom gates, SHRED. Shin Guards are just what you need. Thanks to their SLYTECH™ SHIELD and GATE GLIDE friction-management technology, they provide unmatched shin protection and gate clearing speed. SHRED. Shin Guards give you the confidence you need to focus on your skiing and feel like a pro.

FEATURES:

SLYTECH™ SHIELD | A sturdy material blend engineered with the most advanced technopolymers to make it extremely stiff and durable at all temperatures.

GATE GLIDE | SLYTECH™ SHIELD features NOFRICTION PTFE™ technology additives that minimize friction between the shell and the gate to maximize speed.



SHIN GUARDS GREY/RUST - S

CODE: GUSGSM21S

TECH SPECS:

MATERIAL | SLYTECH™ SHIELD | EVA foam

STRAPS WIDTH | 30 mm / 1.2 in

LENGTH | 31 cm / 12 ¼ in

IN THE BOX:

1 SHRED. Shin Guards S



SHIN GUARDS GREY/RUST - M

CODE: GUSGSM21M

TECH SPECS:

MATERIAL | SLYTECH™ SHIELD | EVA foam

STRAPS WIDTH | 30 mm / 1.2 in

LENGTH | 38 cm / 15 in

IN THE BOX:

1 SHRED. Shin Guards M



SHIN GUARDS GREY/RUST - L

CODE: GUSGSM21L

TECH SPECS:

MATERIAL | SLYTECH™ SHIELD | EVA foam

STRAPS WIDTH | 30 mm / 1.2 in

LENGTH | 42 cm / 16 ½ in

IN THE BOX:

1 SHRED. Shin Guards L



SHIN GUARDS GREY/RUST - PRO

CODE: GUSGSM21P

TECH SPECS:

MATERIAL | SLYTECH™ SHIELD | EVA foam

STRAPS WIDTH | 30 mm / 1.2 in

LENGTH | 43 cm / 17 in

IN THE BOX:

1 SHRED. Shin Guards Pro

ARM GUARDS

If you're a ski racer looking for exceptional performance when you clear giant slalom and super-G gates, SHRED. Arm Guards are the clear contender. Thanks to their SLYTECH™ SHIELD and GATE GLIDE friction-management technology, they provide unmatched forearm protection and gate clearing speed. SHRED. Arm Guards give you the confidence you need to focus on your skiing and feel like a pro.

FEATURES:

SLYTECH™ SHIELD | A sturdy material blend engineered with the most advanced technopolymers to make it extremely stiff and durable at all temperatures.

GATE GLIDE | SLYTECH™ SHIELD features NOFRICTION PFTE™ technology additives that minimize friction between the shell and the gate to maximize speed.



ARM GUARDS GREY/RUST - S

CODE: GUAGSM21S

TECH SPECS:

MATERIAL | SLYTECH™ SHIELD | EVA foam
STRAPS WIDTH | 30 mm [main] | 10 mm [front]
 1.18 in [main] | 10 mm | 0.4 in [front]
LENGTH | 25 cm / 9 ¾ in

IN THE BOX:

1 SHRED. Arm Guards S



ARM GUARDS REPAIR KIT

CODE: SPAGRN11

Compatible with all SHRED. and Slytech Arm Guards.



ARM GUARDS GREY/RUST - M

CODE: GUAGSM21M

TECH SPECS:

MATERIAL | SLYTECH™ SHIELD | EVA foam
STRAPS WIDTH | 30 mm [main] | 10 mm [front]
 1.18 in [main] | 0.4 in [front]
LENGTH | 27.5 cm / 10 ¾ in

IN THE BOX:

1 SHRED. Arm Guards M



ARM GUARDS GREY/RUST - L

CODE: GUAGSM21L

TECH SPECS:

MATERIAL | SLYTECH™ SHIELD | EVA foam
STRAPS WIDTH | 30 mm [main] | 10 mm [front]
 1.18 in [main] | 0.4 in [front]
LENGTH | 30.5 cm / 12 in

IN THE BOX:

1 SHRED. Arm Guards L



SHIN GUARDS REPAIR KIT

CODE: SPSGRN11

Compatible with all SHRED. and Slytech Shin Guards.



RIDER | ANDREJA SLOKAR

BODY PROTECTION SIZE GUIDE

BACK PROTECTORS SIZE GUIDE & PURCHASE GUIDE

	XXS		XS		S		M		L		XL	
	EU/cm	US/in	EU/cm	US/in	EU/cm	US/in	EU/cm	US/in	EU/cm	US/in	EU/cm	US/in
WAIST-TO-SHOULDER [W-S] LENGTH(cm) ⁴	25-30	9½ - 12	30-34	12 - 13½	34-40	13½ - 15½	40-43	15½ - 17	43-46	17-18	46-50	18-20
APPROXIMATE BODY HEIGHT(cm) ⁵	90-105	2'9"-3'5"	105-120	3'5"-3'11"	120-160	3'11"-5'3"	160-170	5'3"-5'7"	170-180	5'7"-5'10"	180-200	5'10"-6'7"
APPROXIMATE BODY WEIGHT (kg)	20-30	45-65	30-40	65-88	40-60	88-130	60-75	130-165	75-85	165-190	85-110	190-240

	NOSHOCK NAKED	FLEXI NAKED	FLEXI VEST ZIP
PROTECTION	★★★★★	★★★★☆	★★★★☆
VENTILATION	★★★★★	★★★★☆	★★★★☆
COMFORT	★★★☆☆	★★★★☆	★★★★★
LIGHTWEIGHT	★★★☆☆	★★★★★	★★★★☆
SAFETY STANDARD	EN 1621-2 Level 2	EN 1621-2 Level 1	EN 1621-2 Level 1
SUGGESTED USE	Race (DH, SG, GS)	Backcountry All Mountain Freestyle Race (SL)	Backcountry All Mountain Freeride

BODY PROTECTION SIZE GUIDE

ELBOW PADS SIZE GUIDE

	S		M		L		XL	
	EU/cm	US/in	EU/cm	US/in	EU/cm	US/in	EU/cm	US/in
BICEPS CIRCUMFERENCE 7	23-26	9-10	26-29	10 - 11½	29-32	11½-12½	32-35	12½-14
FOREARM CIRCUMFERENCE 6	20-24	8-9½	24-28	9½-11	28-31	11-12	31-34	12-13 ½

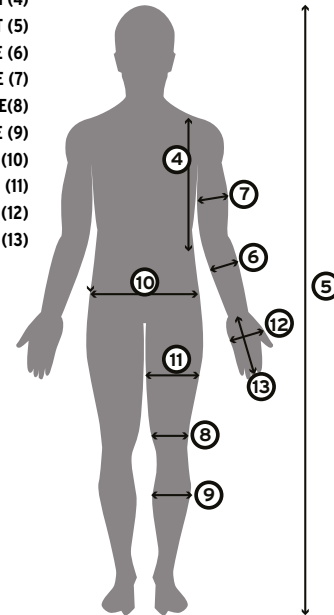
KNEE PADS SIZE GUIDE

	XS		S		M		L		XL	
	EU/cm	US/in	EU/cm	US/in	EU/cm	US/in	EU/cm	US/in	EU/cm	US/in
10CM ABOVE KNEE CAP CIRCUMFERENCE 8	36-39	14½-15½	39-42	15½-16½	42-45	16½-17½	45-48	17½-19	48-50	19-20
Calf Circumference 9	29-32	11½-12½	32-35	12½-14	35-38	14-15	38-41	15-16	41-43	16-17

GLOVES SIZE GUIDE

	XXS		XS		S		M		L		XL	
	EU/cm	US/in	EU/cm	US/in	EU/cm	US/in	EU/cm	US/in	EU/cm	US/in	EU/cm	US/in
HAND CIRCUMFERENCE 12	12-14	5 - 5½	14-17	5½ - 6½	17-19	6½ - 7½	19-22	7½ - 8½	22-24	8½ - 9½	24-27	9½ - 10½
HAND LENGTH 13	12-14	5 - 5½	14-17	5½ - 6½	17-19	6½ - 7½	19-22	7½ - 8½	22-24	8½ - 9½	24-27	9½ - 10½

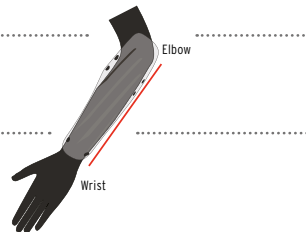
- WAIST-TO-SHOULDER [W-S] LENGTH (4)
- APPROXIMATE BODY HEIGHT (5)
- FOREARM CIRCUMFERENCE (6)
- BICEPS CIRCUMFERENCE (7)
- ABOVE KNEE CAP CIRCUMFERENCE(8)
- CALF CIRCUMFERENCE (9)
- HIP CIRCUMFERENCE (10)
- LEG CIRCUMFERENCE (11)
- HAND CIRCUMFERENCE (12)
- HAND LENGTH (13)



SKI RACE PROTECTION SIZE GUIDE

ARM GUARDS SIZE GUIDE

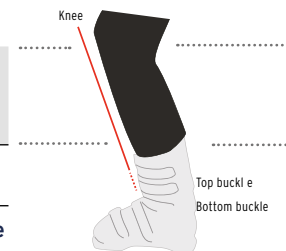
	S		M / STD		L / XTD	
	EU/cm	US/in	EU/cm	US/in	EU/cm	US/in
WRIST TO ELBOW LENGTH	25	9¾	27,5	10¾	30,5	12



SHIN GUARDS SIZE GUIDE

	S		M / STD		L / XTD		PRO*	
	EU/cm	US/in	EU/cm	US/in	EU/cm	US/in	EU/cm	US/in
KNEE TO TOP BUCKLE LENGTH	31	12¾	38	15	42	16½	43	17

* choose PRO to cover up to the bottom buckle



ARM & SHIN GUARDS PURCHASE GUIDE

	CARBON	WHY	STANDARD	WHY
DURABILITY	★★★★★	SLYTECH™ SHIELD CARBON shell	★★★★☆	SLYTECH™ SHIELD shell
LIGHTWEIGHT	★★★★★	Carbon composite material	★★★★☆	SLYTECH™ SHIELD shell
SHIN GRIP	★★★★★	SHRED. grip pads	★★★★★	SHRED. grip pads
GATE GLIDE	★★★★★	ADVANCED GATE GLIDE NO FRICTION PTFE	★★★★☆	GATE GLIDE

ACCESSORIES

SNOW | 2024-2025



SHRED.

CLOTHING

T-SHIRT BLACK*



SMALL
MEDIUM
LARGE
X-LARGE

CODE: CLTSHJ11S
CODE: CLTSHJ11M
CODE: CLTSHJ11L
CODE: CLTSHJ11XL

TECH SPECS:

COMPOSITION | 100% Cotton
FABRIC WEIGHT | 150 gm/m2 /
4.42 oz/yd2
FABRIC COLOR | Black

T-SHIRT CHARCOAL*



SMALL
MEDIUM
LARGE
X-LARGE

CODE: CLTSHM14S
CODE: CLTSHM14M
CODE: CLTSHM14L
CODE: CLTSHM14XL

TECH SPECS:

COMPOSITION | 100% Cotton
FABRIC WEIGHT | 150 gm/m2 /
4.42 oz/yd2
FABRIC COLOR | Grey

T-SHIRT NAVY*



SMALL
MEDIUM
LARGE
X-LARGE

CODE: CLTSHJ13S
CODE: CLTSHJ13M
CODE: CLTSHJ13L
CODE: CLTSHJ13XL

TECH SPECS:

COMPOSITION | 100% Cotton
FABRIC WEIGHT | 150 gm/m2 /
4.42 oz/yd2
FABRIC COLOR | Blue Navy

T-SHIRT GREY*



SMALL
MEDIUM
LARGE
X-LARGE

CODE: CLTSHM15S
CODE: CLTSHM15M
CODE: CLTSHM15L
CODE: CLTSHM15XL

TECH SPECS:

COMPOSITION | 100% Cotton
FABRIC WEIGHT | 150 gm/m2 /
4.42 oz/yd2
FABRIC COLOR | Light Grey

SWEATSHIRT CHARCOAL*



SMALL
MEDIUM
LARGE
X-LARGE

CODE: CLCNSJ11S
CODE: CLCNSJ11M
CODE: CLCNSJ11L
CODE: CLCNSJ11XL

TECH SPECS:

COMPOSITION | 50% Cotton / 50% Polyester
FABRIC WEIGHT | 290 gm/m2 / 8.55 oz/yd2
FABRIC COLOR | Heather Dark Grey

SWEATSHIRT GREY*



SMALL
MEDIUM
LARGE
X-LARGE

CODE: CLCNSN12S
CODE: CLCNSN12M
CODE: CLCNSN12L
CODE: CLCNSN12XL

TECH SPECS:

COMPOSITION | 50% Cotton / 50% Polyester
FABRIC WEIGHT | 290 gm/m2 / 8.55 oz/yd2
FABRIC COLOR | Heather Dark Grey

HOODIE CHARCOAL*



SMALL
MEDIUM
LARGE
X-LARGE

CODE: CLHODN12S
CODE: CLHODN12M
CODE: CLHODN12L
CODE: CLHODN12XL

TECH SPECS:

COMPOSITION | 50% Cotton / 50% Polyester
FABRIC WEIGHT | 290 gm/m2 / 8.55 oz/yd2
FABRIC COLOR | Heather Dark Grey

HOODIE GREY*



SMALL
MEDIUM
LARGE
X-LARGE

CODE: CLHODJ11S
CODE: CLHODJ11M
CODE: CLHODJ11L
CODE: CLHODJ11XL

TECH SPECS:

COMPOSITION | 50% Cotton / 50% Polyester
FABRIC WEIGHT | 290 gm/m2 / 8.55 oz/yd2
FABRIC COLOR | Heather Grey

*NOT FOR SALE IN EUROPE

HEADWEAR



TECH SPECS:
COMPOSITION | 100% Acrylic



TECH SPECS:
COMPOSITION | 100% Acrylic



TECH SPECS:
COMPOSITION | 100% Acrylic



TECH SPECS:
COMPOSITION | 100% Acrylic



TECH SPECS:
COMPOSITION | 100% Acrylic



TECH SPECS:
COMPOSITION | 100% Acrylic



TECH SPECS:
COMPOSITION | 100% Acrylic



TECH SPECS:
COMPOSITION | 100% Acrylic



TECH SPECS:
COMPOSITION | 100% Acrylic



TECH SPECS:
COMPOSITION | 100% Acrylic



TECH SPECS:
COMPOSITION | 100% Acrylic

HEADWEAR

SIZE:
ONE SIZE
FITS ALL

**HEADBAND
BLACK**
CODE: ACHKHJ11



TECH SPECS:
CONSTRUCTION | Heavy Knitted | Fleece Lining
COMPOSITION | 100% Acrylic

SIZE:
ONE SIZE
FITS ALL

**HEADBAND
GREY**
CODE: ACHKHM13



TECH SPECS:
CONSTRUCTION | Heavy Knitted | Fleece Lining
COMPOSITION | 100% Acrylic

SIZE:
ONE SIZE
FITS ALL

**RIDGE CAP
BLACK**
CODE: ACRG CJ11



TECH SPECS:
COMPOSITION | 100% Cotton

SIZE:
ONE SIZE
FITS ALL

**SNAPBACK CAP
BLACK**
CODE: ACFBCJ11



TECH SPECS:
COMPOSITION | 100% Cotton

SIZE :
ONE SIZE
FITS ALL

**RECYCLED NECKWARMER
NIGHT FLASH**
CODE: ACNKWM21



TECH SPECS:
COMPOSITION | 100% R-PET

BOOSTERTM



DYNAMIC POWER STRAPS

THE ELASTIC STRAP THAT MAKES ANY SKIER BETTER.

DYNAMIC ELASTIC STRAPS

Dynamiczne, elastyczne paski rozciągają się, umożliwiając bardzo ciasne zapięcie w celu zwiększenia wydajności. Standardowy pasek Power Strap nie blokuje cię tak, jak Booster Strap, zapewniając niesamowicie ciasne zapięcie. Zapewniają one również amortyzację

ŁATWA INSTALACJA

1. Usuń stary pasek i zachowaj stare śruby mocujące.
2. Załóż but narciarski i umieść Booster tak, jak pokazano na rysunku, tak aby elastyczna część znajdowała się nad językiem i pod plastikiem z przodu oraz z klamrą krzywkową skierowaną na zewnątrz. Umieść pasek w tylnym plastiku nad starymi otworami.
3. Napnij pasek, ciągnąc go zgodnie z preferencjami, trzymając go z tyłu, aby napis "Booster" znajdował się z przodu.
4. Utrzymując preferowane napięcie, przesunąć pasek, aby wyśrodkować napis "Booster" nad przednim językiem.
5. Wykonaj sztydem otwór/otwory w pasku odpowiadające otworowi/otworom w plastiku starego paska.
6. Przymocuj Booster za pomocą starych śrub

UŻYWANY PRZEZ 80% SPORTOWCÓW

Booster Straps pozwalają na szybsze inicjowanie skrętów i bardziej responsywne wrażenia z jazdy na nartach. Dzięki sztywniejszemu flexowi, zapewniają wyjątkowe przenoszenie mocy i precyzyjne prowadzenie.



BOOSTER WCUP



Booster World Cup
3 reinforced elastic bands. Engineered to fit the needs of the World Cup skier.

BOOSTER MED



Booster Medium (Expert/Racer)
3 elastic bands. Ideal for very good skiers and racers.

BOOSTER SOFT



Booster Soft (Intermediate)
2 elastic bands. Ideal for good skiers and for light/not aggressive racer.

BOOSTER KID



Booster Kid
2 short elastic bands. Ideal for Kids.

UBONBLCMD



UBONGRCMD



UBONORCMD



UBONPKCMD



UBONYECMD

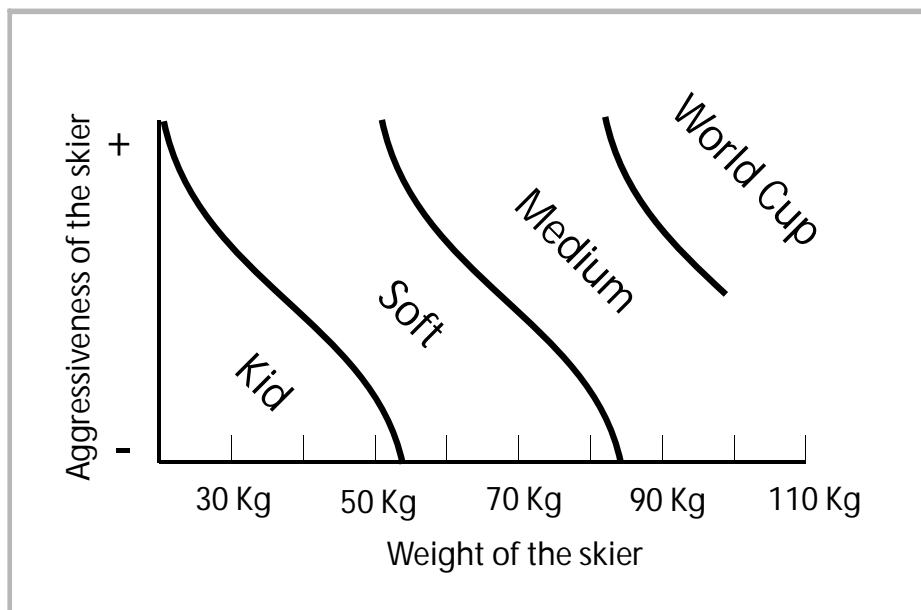


LIMITED EDITION - AVAILABLE ONLY IN PRE-SEASON

BOOSTER SKI STRAP MEDIUM - NEON BLUE
BOOSTER SKI STRAP MEDIUM - NEON GREEN
BOOSTER SKI STRAP MEDIUM - NEON ORANGE
BOOSTER SKI STRAP MEDIUM - NEON PINK
BOOSTER SKI STRAP MEDIUM - NEON YELLOW

ADJUSTING THE BOOSTER

1. Aby uzyskać maksymalną wydajność, pasek Booster powinien być poprowadzony na zewnątrz tylnego spojlera i wewnątrz plastikowej skorupy, aż do języka z przodu.
2. Aby Booster był skuteczny, należy go rozciągnąć. Zaczynj od rozciągnięcia o 2 cm.
3. Jeśli podczas pierwszego skrętu nie zauważysz znacznej różnicy w reakcji nart, pasek Booster jest zbyt luźny lub nieprawidłowo zamontowany.
4. Z drugiej strony, jeśli po kilku skrętach poczujesz, że coś popycha cię do tyłu, pasek Booster jest zbyt ciasny.
5. Im większe rozciągnięcie, tym większa poprawa wydajności. Należy jednak uważać, aby nie przesadzić.
6. Dostosuj napięcie pasów do swojej techniki, dyscypliny i warunków śniegowych.
7. Należy pamiętać, że jak w każdym sporcie, poziom umiejętności wzrasta wraz z doświadczeniem, więc ustawienia Boostera mogą się zmieniać wraz z upływem czasu. Dostosuj je do swojego poziomu umiejętności.





**ELASTYCZNY PASEK,
KTÓRY CZYNI KAŻDEGO
NARCIARZA LEPSZYM.**



IMPORTED AND DISTRIBUTED BY

SHRED. www.shredoptics.com

AAS srl (Europe)
Viale Ancona, 26 - 30172 Venezia Mestre - Italy
+39 041 2517271

©2019 Anomaly Action Sports srl. Reproduction prohibited. All rights reserved. The images shown are only representations of some of the configurations available for the products. Availability may vary depending on region. To the fullest extent permitted by law, Anomaly Action Sports does not make any warranties or representations regarding the use of the materials or content in this catalog in terms of their correctness, accuracy, adequacy, usefulness, reliability or otherwise. All products designed and engineered to the highest quality by Anomaly Action Sports srl.

NORDICA

UYN



SHRED.

Robert Psiuk

Nordica Race Manager | UYN Brand Manager

M: 663 866 475

E: robert.psiuk@ski-system.pl

Wojciech Kurzawa

Nordica Product Manager

M: 883 392 500

E: w.kurzawa@nordica.pl

Wojciech Michalak

Nordica Product Manager

M: 668 304 176

E: w.michalak@nordica.pl

Ski System Sp. z o.o.
Winogrody 151
61-626, Poznań
www.ski-system.pl